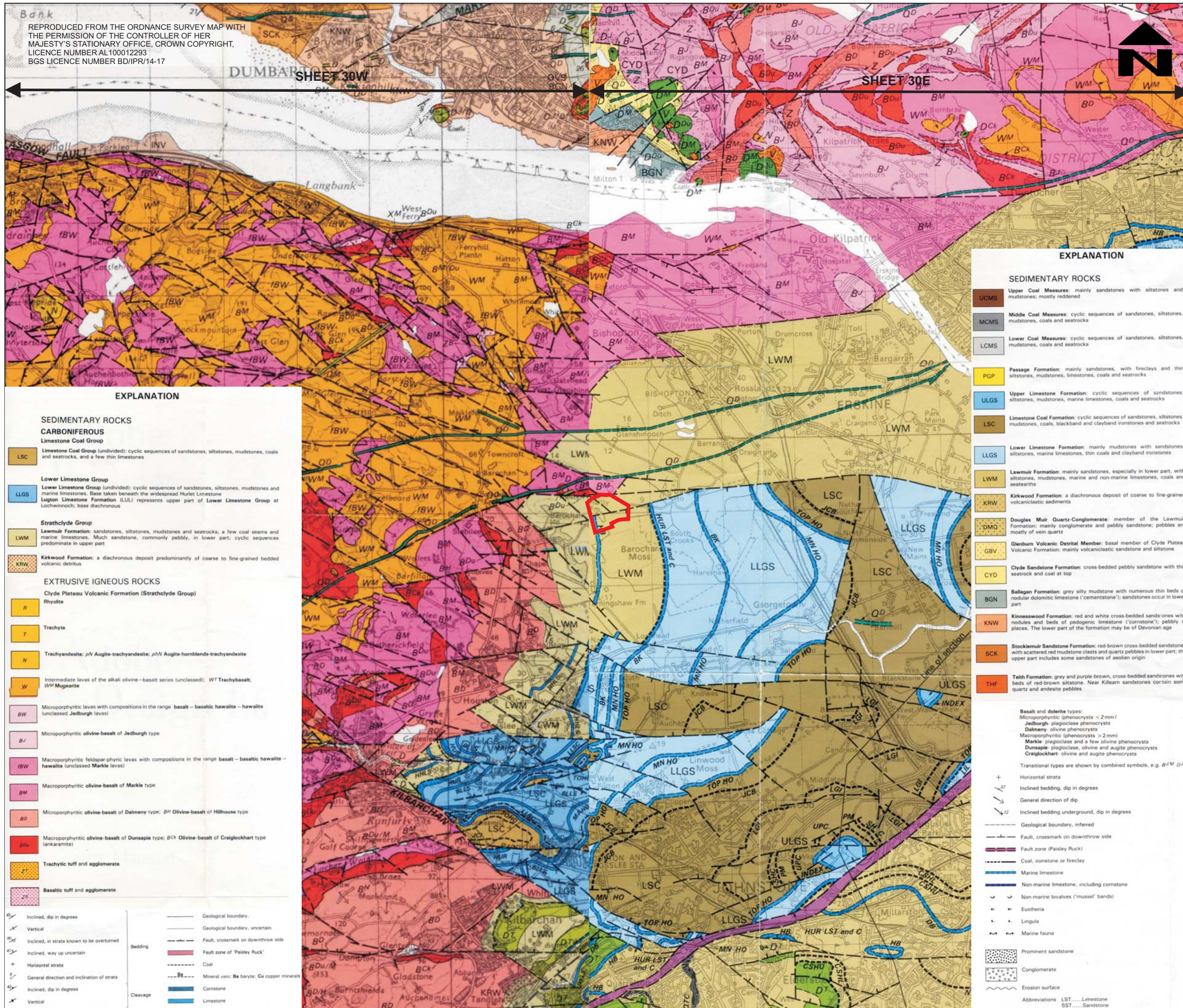


REPRODUCED FROM THE ORDNANCE SURVEY MAP WITH THE PERMISSION OF THE CONTROLLER OF HER MAJESTY'S STATIONARY OFFICE, CROWN COPYRIGHT, LICENCE NUMBER AL100012293 BGS LICENCE NUMBER BD/IPR/14-17



NOTES



PLANNING APPLICATION BOUNDARY

EXPLANATION

SEDIMENTARY ROCKS

- UCMS** Upper Coal Measures: mainly sandstones with siltstones and mudstones; mostly reddened
- MCMS** Middle Coal Measures: cyclic sequences of sandstones, siltstones, mudstones, coals and seatracks
- LCMS** Lower Coal Measures: cyclic sequences of sandstones, siltstones, mudstones, coals and seatracks
- PGP** Passage Formation: mainly sandstones, with fireclays and thin siltstones, mudstones, limestones, coals and seatracks
- ULGS** Upper Limestone Formation: cyclic sequences of sandstones, siltstones, mudstones, marine limestones, coals and seatracks
- LSC** Limestone Coal Formation: cyclic sequences of sandstones, siltstones, mudstones, coals, blackband and clayband ironstones and seatracks
- LLGS** Lower Limestone Formation: mainly mudstones with sandstones, siltstones, marine limestones, thin coals and clayband ironstones
- LWM** Lawmuir Formation: mainly sandstones, especially in lower part, with siltstones, mudstones, marine and non-marine limestones, coals and seatracks
- KRW** Kirkwood Formation: a diachronous deposit of coarse to fine-grained volcanoclastic sediments
- DMQ** Douglas Muir Quartz-Conglomerate: member of the Lawmuir Formation: mainly conglomerate and pebbly sandstone; pebbles are mostly of vein quartz
- GBV** Glenburn Volcanic Detrital Member: basal member of Clyde Plateau Volcanic Formation: mainly volcanoclastic sandstone and siltstone
- CYD** Clyde Sandstone Formation: cross-bedded pebbly sandstone with thin seatrack and coal at top
- BGN** Ballagan Formation: grey silty mudstone with numerous thin beds of nodular dolomitic limestone ('cementstone'); sandstones occur in lower part
- KNW** Kinnesswood Formation: red and white cross-bedded sands: ones with nodules and beds of pedogenic limestone ('cementstone'); pebbly in places. The lower part of the formation may be of Devonian age
- SCK** Stockiemuir Sandstone Formation: red-brown cross-bedded sandstones with scattered red mudstone clasts and quartz pebbles in lower part; the upper part includes some sandstones of aeolian origin
- THF** Teith Formation: grey and purple-brown, cross-bedded sandstones with beds of red-brown siltstone. Near Killeam sandstones contain some quartz and andesite pebbles

- Basalt and dolerite types: Microphyritic (phenocrysts < 2mm) Jedburgh: plagioclase phenocrysts Dalmeny: olivine phenocrysts Macrophphyritic (phenocrysts > 2mm) Markle: plagioclase and a few olivine phenocrysts Dunsapie: plagioclase, olivine and augite phenocrysts Craiglockhart: olivine and augite phenocrysts
- Transitional types are shown by combined symbols, e.g. B^{DM} D^{PD}
- + Horizontal strata
- ↘ 17° Inclined bedding, dip in degrees
- ↘ 12° General direction of dip
- ↘ 12° Inclined bedding underdip, dip in degrees
- - - - - Geological boundary, inferred
- - - - - Fault, crossmark on downthrow side
- - - - - Fault zone (Paisley Ruck)
- - - - - Coal, ironstone or fireclay
- - - - - Marine limestone
- - - - - Non-marine limestone, including corstone
- ∩ ∩ Non-marine bivalves ('mussel' bands)
- ∩ ∩ Eustheria
- ∩ ∩ Lingula
- ∩ ∩ Marine fauna
- ∩ ∩ Prominent sandstone
- ∩ ∩ Conglomerate
- ∩ ∩ Erosion surface
- Abbreviations LST.....Limestone SST.....Sandstone

EXPLANATION

SEDIMENTARY ROCKS

- CARBONIFEROUS**
- Limestone Coal Group**
- LSC** Limestone Coal Group (undivided): cyclic sequences of sandstones, siltstones, mudstones, coals and seatracks, and a few thin limestones
- Lower Limestone Group**
- LLGS** Lower Limestone Group (undivided): cyclic sequences of sandstones, siltstones, mudstones and marine limestones. Base taken beneath the widespread Hurlet Limestone
- Lugton Limestone Formation (LUL)** represents upper part of Lower Limestone Group at Lochwinnoch; base diachronous
- Strathclyde Group**
- LWM** Lawmuir Formation: sandstones, siltstones, mudstones and seatracks; a few coal seams and marine limestones. Much sandstone, commonly pebbly, in lower part; cyclic sequences predominate in upper part
- KRW** Kirkwood Formation: a diachronous deposit predominantly of coarse to fine-grained bedded volcanoclastic detritus

EXTRUSIVE IGNEOUS ROCKS

- Clyde Plateau Volcanic Formation (Strathclyde Group)**
- R** Rhyolite
- T** Trachyte
- N** Trachyandesite; pN Augite-trachyandesite; pN Augite-hornblende-trachyandesite
- W** Intermediate lavas of the alkali olivine-basalt series (unclassified); W7 Trachybasalt; W9 Mugearite
- BW** Micropphyritic lavas with compositions in the range basalt - basaltic hawaitite - hawaitite (unclassified Jedburgh lavas)
- BJ** Micropphyritic olivine-basalt of Jedburgh type
- IBW** Macropphyritic feldspar-phiric lavas with compositions in the range basalt - basaltic hawaitite - hawaitite (unclassified Markle lavas)
- BM** Macropphyritic olivine-basalt of Markle type
- BD** Micropphyritic olivine-basalt of Dalmeny type; BH Olivine-basalt of Hillhouse type
- BDu** Macropphyritic olivine-basalt of Dunsapie type; BCK Olivine-basalt of Craiglockhart type (ankaramite)
- Z** Trachytic tuff and agglomerate
- Z** Basaltic tuff and agglomerate

- ∩ ∩ Inclined, dip in degrees
- ∩ ∩ Vertical
- ∩ ∩ Inclined, in strata known to be overturned
- ∩ ∩ Inclined, way up uncertain
- + Horizontal strata
- ↘ 17° General direction and inclination of strata
- ↘ 12° Inclined, dip in degrees
- ∩ ∩ Vertical
- - - - - Geological boundary
- - - - - Geological boundary, uncertain
- - - - - Fault, crossmark on downthrow side
- - - - - Fault zone ('Paisley Ruck')
- - - - - Coal
- - - - - Mineral vein: Ba baryte; Cu copper minerals
- - - - - Cleavage
- - - - - Cornstone
- - - - - Limestone

0	JUN 09	GR	
Revision	Issue Date	Issue By	Comments



Site: BISHOPTON RO FACTORY
Project: LANDFILL ENVIRONMENTAL ASSESSMENT

Drawing: Extract of Solid Geological Plan

Date: JUNE 2009	Drawing No.: 11.2
Scale: 1:50,000	

405-0155-00008_0609_HYD_11.2_0_405-MM

4 THE ROUNDAL
RODDINGLAW BUS. PRK
GOGAR, EDINBURGH
EH12 9DB
T: 0131 3356830
F: 0131 3356831
www.slrc consulting.co.uk