

REPRODUCED FROM THE ORDNANCE SURVEY MAP WITH THE PERMISSION OF THE CONTROLLER OF HER MAJESTY'S STATIONARY OFFICE, CROWN COPYRIGHT, LICENCE NUMBER AL100012293 BGS LICENCE NUMBER BD/IPR/14-17

DUMBA SHEET 30W

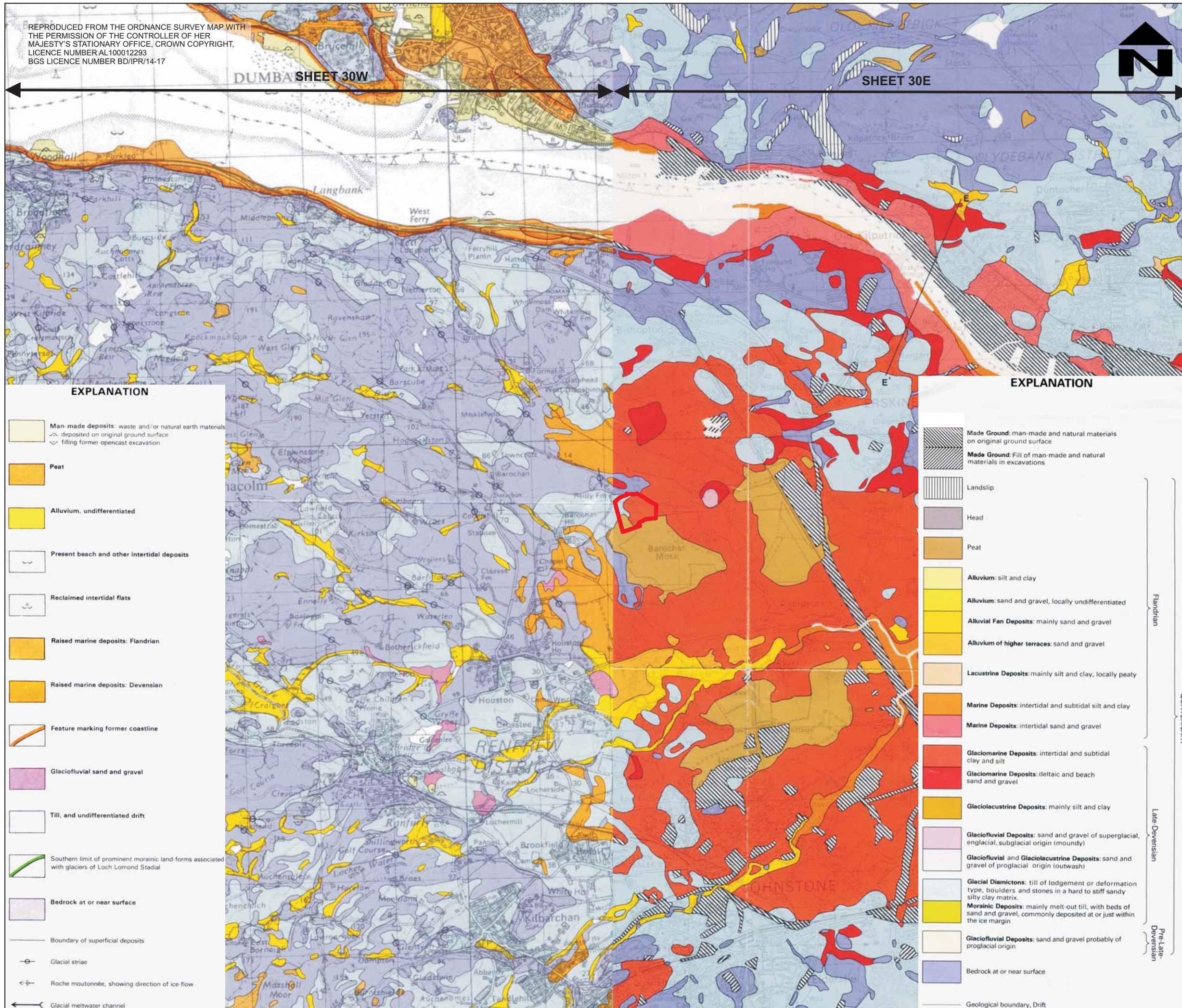
SHEET 30E



NOTES



PLANNING APPLICATION BOUNDARY



EXPLANATION

- Man-made deposits: waste and/or natural earth materials deposited on original ground surface or filling former opencast excavation
- Peat
- Alluvium, undifferentiated
- Present beach and other intertidal deposits
- Reclaimed intertidal flats
- Raised marine deposits: Flandrian
- Raised marine deposits: Devensian
- Feature marking former coastline
- Glaciofluvial sand and gravel
- Till, and undifferentiated drift
- Southern limit of prominent morainic land-forms associated with glaciers of Loch Lomond Stadial
- Bedrock at or near surface
- Boundary of superficial deposits
- Glacial striae
- Roche moutonnée, showing direction of ice-flow
- Glacial meltwater channel

EXPLANATION

- Made Ground: man-made and natural materials on original ground surface
- Made Ground: Fill of man-made and natural materials in excavations
- Landslip
- Head
- Peat
- Alluvium: silt and clay
- Alluvium: sand and gravel, locally undifferentiated
- Alluvial Fan Deposits: mainly sand and gravel
- Alluvium of higher terraces: sand and gravel
- Lacustrine Deposits: mainly silt and clay, locally peaty
- Marine Deposits: intertidal and subtidal silt and clay
- Marine Deposits: intertidal sand and gravel
- Glaciomarine Deposits: intertidal and subtidal clay and silt
- Glaciomarine Deposits: deltaic and beach sand and gravel
- Glaciolacustrine Deposits: mainly silt and clay
- Glaciofluvial Deposits: sand and gravel of supraglacial, englacial, subglacial origin (moundy)
- Glaciofluvial and Glaciolacustrine Deposits: sand and gravel of proglacial origin (outwash)
- Glacial Diamictic: till of lodgement or deformation type, boulders and stones in a hard to stiff sandy silty clay matrix.
- Morainic Deposits: mainly melt-out till, with beds of sand and gravel, commonly deposited at or just within the ice margin
- Glaciofluvial Deposits: sand and gravel probably of proglacial origin
- Bedrock at or near surface
- Geological boundary, Drift

Flandrian
 QUATERNARY
 Late-Devensian
 Pre-Late-Devensian

0	JUN 09	GR	
Revision	Issue Date	Issue By	Comments



Site: BISHOPTON RO FACTORY
 Project: LANDFILL ENVIRONMENTAL ASSESSMENT

Drawing: **Extract of Drift Geological Plan**

Date: JUNE 2009
 Scale: 1:50,000
 Drawing No.: 11.1

405-0155-00008_0609_HYD_11.1_0_405-MM

4 THE ROUNDAL
 RODDINGLAW BUS. PRK
 GOGAR, EDINBURGH
 EH12 9DB
 T: 0131 3356830
 F: 0131 3356831
 www.slrconsulting.co.uk