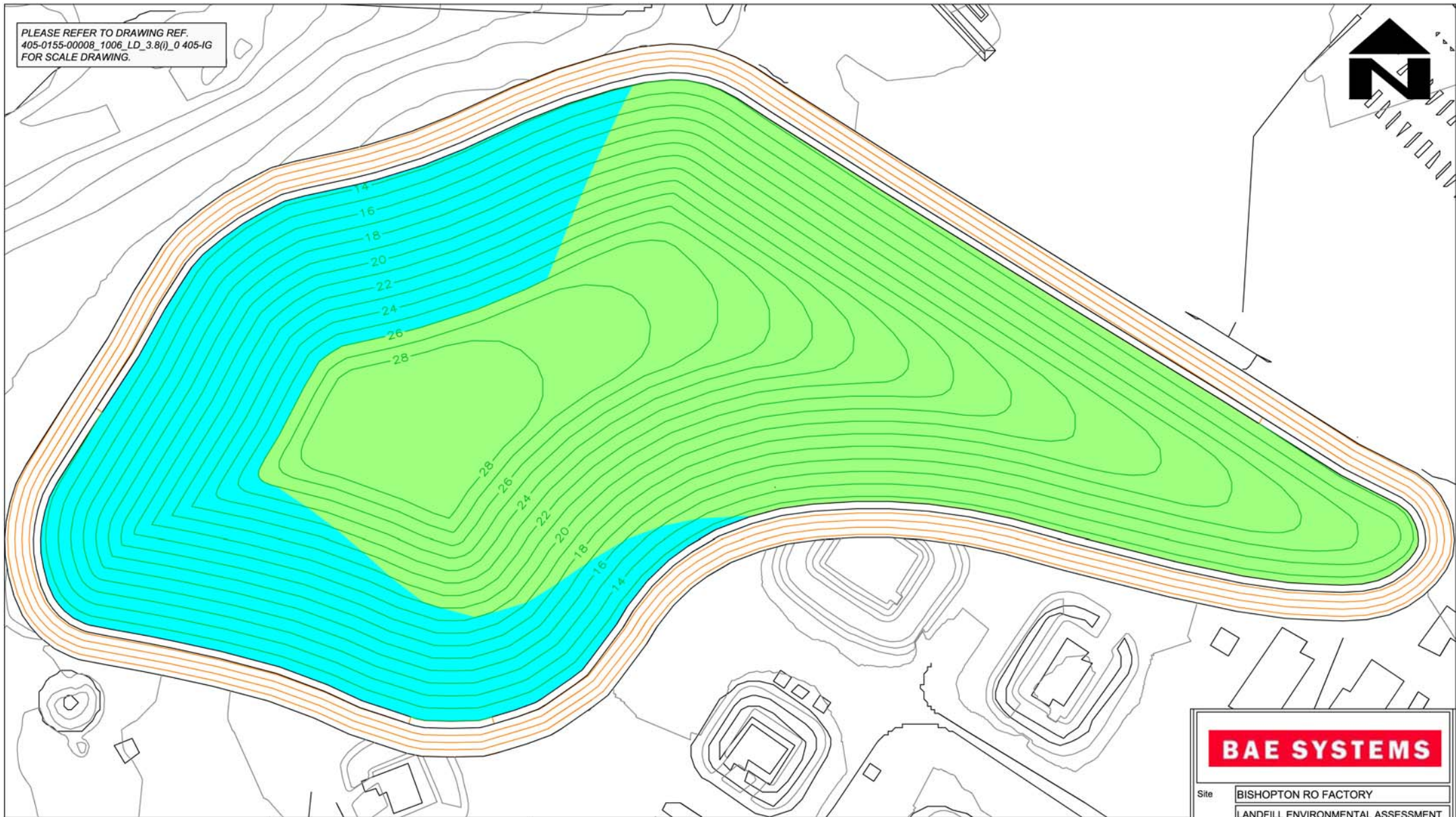


PLEASE REFER TO DRAWING REF.
405-0155-00008_LD_3.8(i)_0 405-IG
FOR SCALE DRAWING.



NOTES

LEGEND

-  14 TOP OF LINER/TOP OF LEACHATE DRAINAGE BLANKET CONTOURS
-  14 TEMPORARY WASTE AT 1:3
-  14 FINAL RESTORATION CONTOURS
-  CAPPED AND RESTORED AREA
-  PREVIOUSLY CAPPED AND RESTORED AREA

VOID SPACE FROM TOP OF DRAINAGE BLANKET TO TOP OF RESTORATION LEVELS:
120,986m³

CURRENT CAPPING AREA:
23,310m²

INTERCELL BUND VOLUME:
0m³

NET PHASE 3 VOID SPACE:
97,676m³



Site: BISHOPTON RO FACTORY
LANDFILL ENVIRONMENTAL ASSESSMENT

Drawing: Phase of Construction of Landfill Facility
Phase 3 Top of Waste

Date: OCTOBER 2006 Drawing No.: 3.8(i)
Scale: NTS

405-0155-00008_0906_LD_3.8(i)_0 405-IG



4 THE ROUNDAL
RODDINGLAW BUS. PRK
GOGAR, EDINBURGH
EH12 9DB
T: 0131 335 6830
F: 0131 335 6831
www.slrconsulting.co.uk

Revision	Issue Date	Issued By	Comments
0	OCT 06	DT	