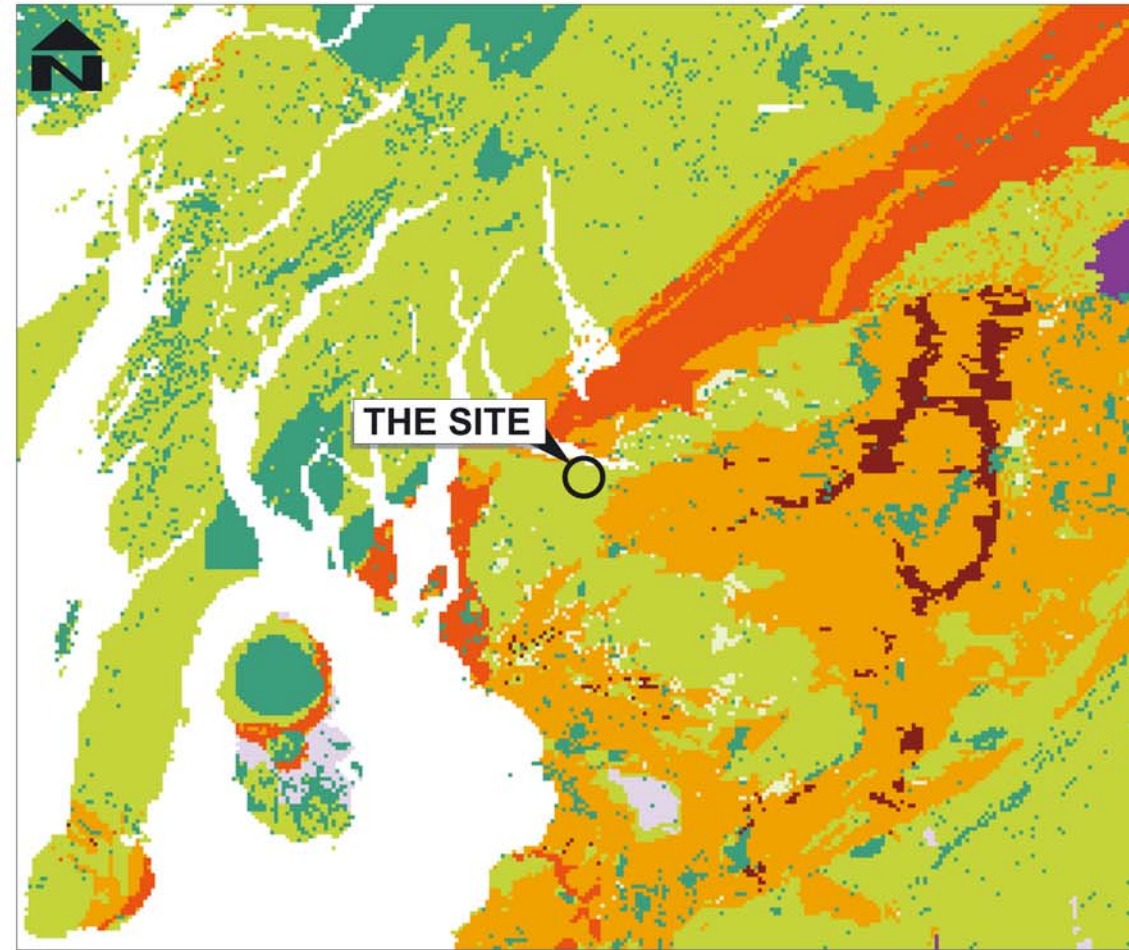
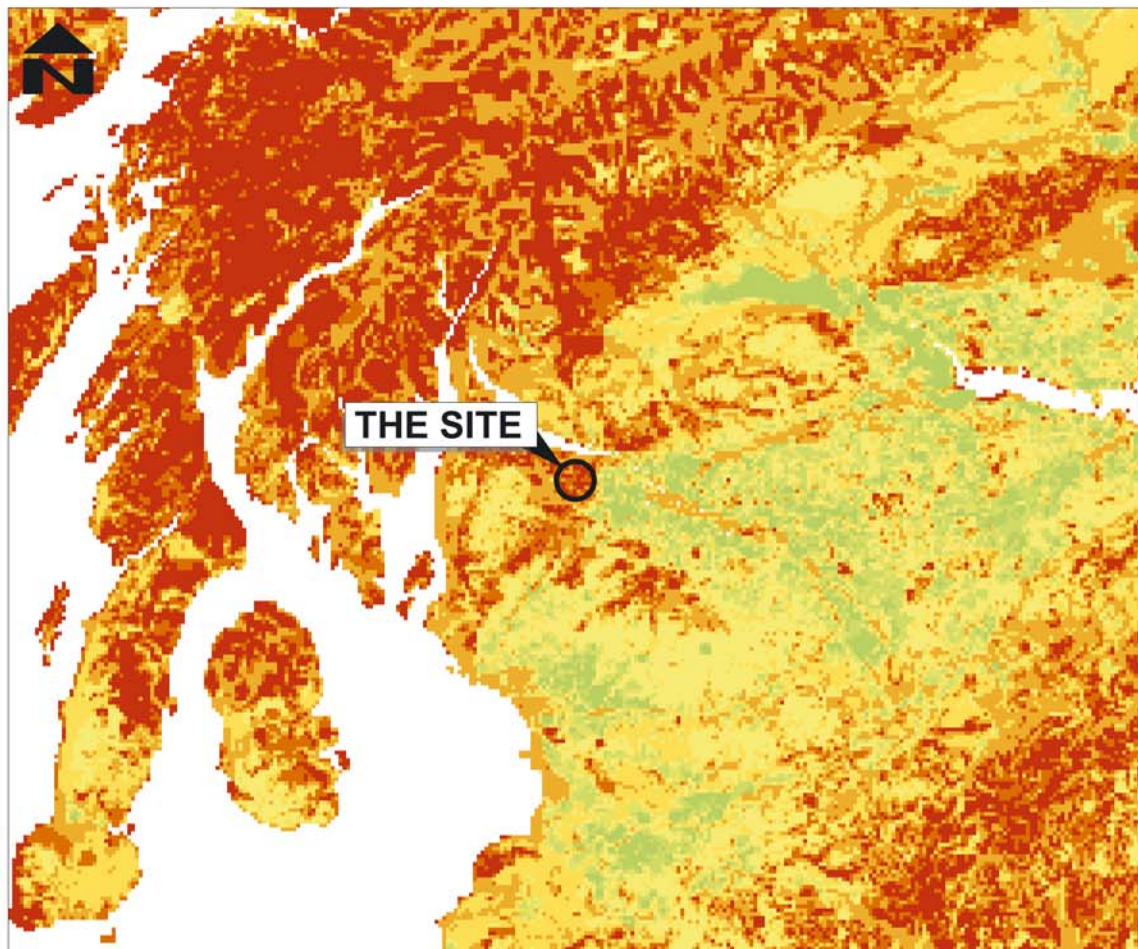


Superficial Aquifers



Bedrock Aquifers



Groundwater Vulnerability in the Upper Most Aquifer



Map Extract

LEGEND

- Uk Coastline
- Superficial Aquifers**
 - DI = Dominantly intergranular flow
 - IF = Intergranular fracture flow
 - I = Intergranular flow
 - F = Fracture flow
- VALUE**
 - I H
 - I M
 - I L
- Bedrock Aquifers**
 - VH = Very High productivity
 - H = High productivity
 - M = Moderate productivity
 - L = Low productivity
- Value**
 - DI VH
 - IF VH
 - DI H
 - IF H
 - IF M
 - F M
 - IF L
 - F L
 - IF VL
 - F VL
- Vulnerability Class**
 - 5 (Most vulnerable)
 - 4a
 - 4b
 - 4c
 - 4d
 - 3
 - 2
 - 1 (Least vulnerable)

PLEASE REFER TO DRAWING REF.
405-0155-00008_1006-LEA_12.2_0 405-MM
FOR SCALE DRAWING

0	OCT 06	GR	
Revision	Issue Date	Issue By	Comments



Site: BISHOPTON RO FACTORY
Project: LANDFILL ENVIRONMENTAL ASSESSMENT

Drawing: **Aquifer Type and Groundwater Vulnerability**

Date: OCTOBER 2006 Drawing No. 12.2
Scale: N.T.S.

405-0155-00008_1006_LEA_002_0 405-MM

4 THE ROUNDAL
RODDINGLAW BUS. PRK
GOGAR, EDINBURGH
EH12 9DB
T: 0131 3356830
F: 0131 3356831
www.slrconsulting.co.uk