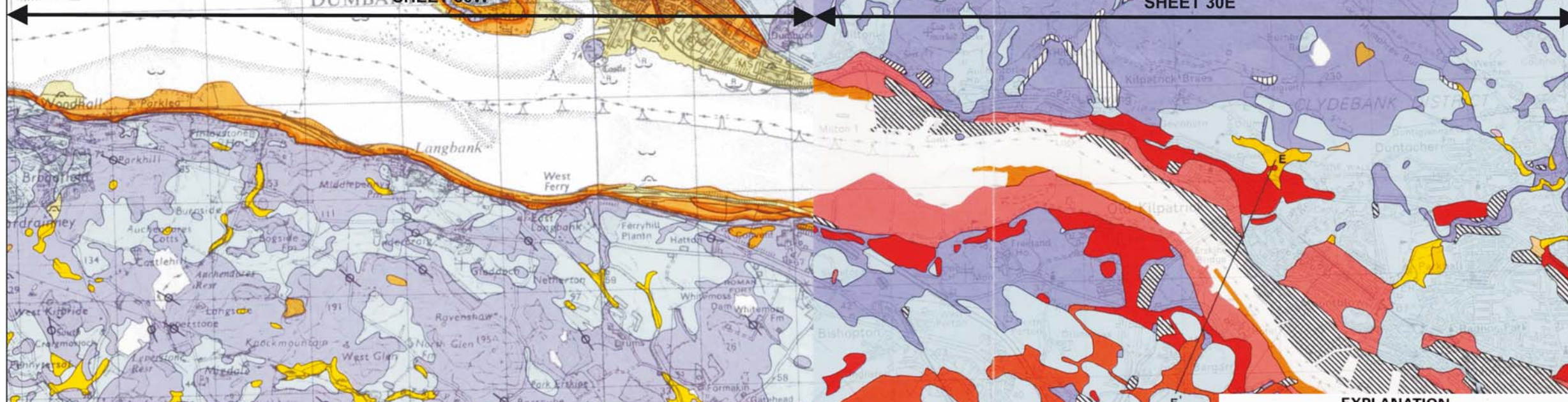


REPRODUCED FROM THE ORDNANCE SURVEY MAP WITH THE PERMISSION OF THE CONTROLLER OF HER MAJESTY'S STATIONARY OFFICE, CROWN COPYRIGHT, LICENCE NUMBER AL100012293 BGS LICENCE NUMBER BD/IPR/14-17

DUMBA SHEET 30W

SHEET 30E



**EXPLANATION**

- Man-made deposits: waste and/or natural earth materials deposited on original ground surface
- filling former opencast excavation
- Peat
- Alluvium, undifferentiated
- Present beach and other intertidal deposits
- Reclaimed intertidal flats
- Raised marine deposits: Flandrian
- Raised marine deposits: Devensian
- Feature marking former coastline
- Glaciofluvial sand and gravel
- Till, and undifferentiated drift
- Southern limit of prominent morainic land-forms associated with glaciers of Loch Lomond Stadial
- Bedrock at or near surface
- Boundary of superficial deposits
- Glacial striae
- Roche moutonnée, showing direction of ice-flow
- Glacial meltwater channel

**EXPLANATION**

- Made Ground: man-made and natural materials on original ground surface
- Made Ground: Fill of man-made and natural materials in excavations
- Landslip
- Head
- Peat
- Alluvium: silt and clay
- Alluvium: sand and gravel, locally undifferentiated
- Alluvial Fan Deposits: mainly sand and gravel
- Alluvium of higher terraces: sand and gravel
- Lacustrine Deposits: mainly silt and clay, locally peaty
- Marine Deposits: intertidal and subtidal silt and clay
- Marine Deposits: intertidal sand and gravel
- Glaciomarine Deposits: intertidal and subtidal clay and silt
- Glaciomarine Deposits: deltaic and beach sand and gravel
- Glaciolacustrine Deposits: mainly silt and clay
- Glaciofluvial Deposits: sand and gravel of superglacial, englacial, subglacial origin (moundy)
- Glaciofluvial and Glaciolacustrine Deposits: sand and gravel of proglacial origin (outwash)
- Glacial Diamictons: till of lodgement or deformation type, boulders and stones in a hard to stiff sandy silty clay matrix.
- Morainic Deposits: mainly melt-out till, with beds of sand and gravel, commonly deposited at or just within the ice margin
- Glaciofluvial Deposits: sand and gravel probably of proglacial origin
- Bedrock at or near surface
- Geological boundary, Drift

**NOTES**



PLANNING APPLICATION BOUNDARY

PLEASE REFER TO DRAWING REF. 405-0155-00008\_1006-LEA\_11.1\_0 405-MM FOR SCALE DRAWING

|          |            |          |          |
|----------|------------|----------|----------|
| 0        | OCT 06     | GR       |          |
| Revision | Issue Date | Issue By | Comments |



Site: BISHOPTON RO FACTORY  
Project: LANDFILL ENVIRONMENTAL ASSESSMENT

Drawing: **Extract of Drift Geological Plan**

Date: OCTOBER 2006  
Scale: NTS  
Drawing No.: **11.1**

405-0155-00008\_1006\_LEA\_11.1\_0\_405-MM



4 THE ROUNDAL  
RODDINGLAW BUS. PRK  
GOGAR, EDINBURGH  
EH12 9DB  
T: 0131 3356830  
F: 0131 3356831  
www.slrconsulting.co.uk

QUATERNARY  
Flandrian  
Late-Devensian  
Pre-Late-Devensian