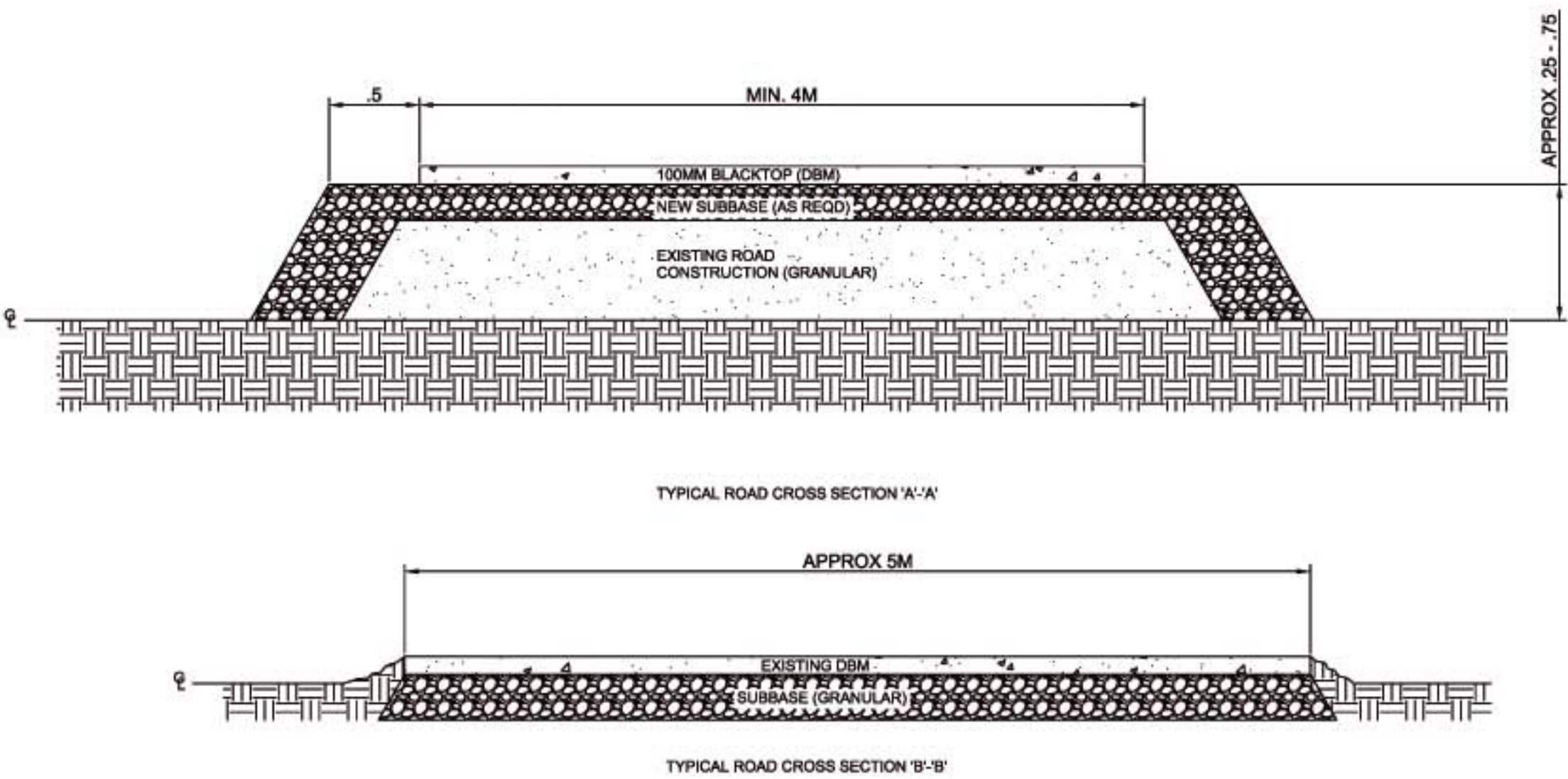
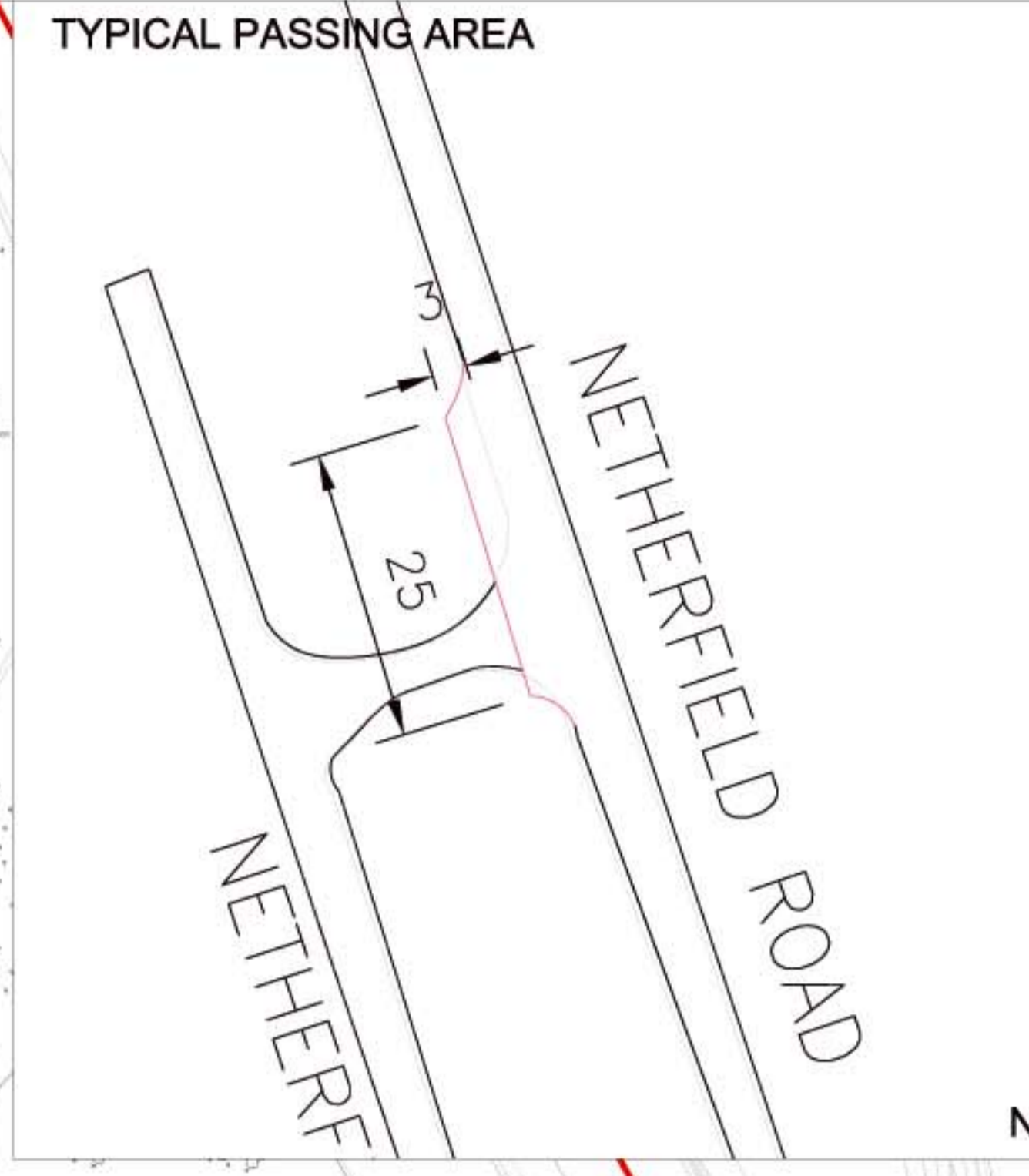


CROSS SECTIONS OF HAUL ROAD



NTS



NTS



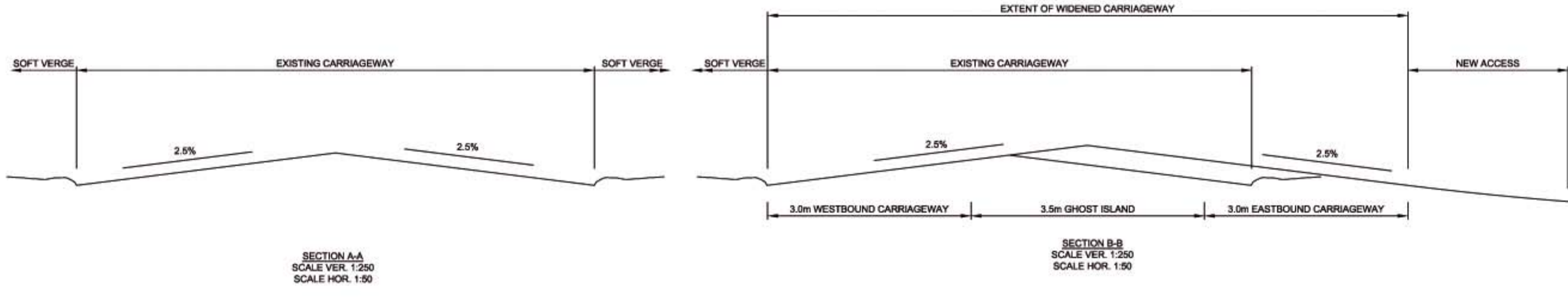
- PROPOSED ROUTE OF HAUL ROAD
- ① ② PASSING AREAS
- WOODLAND QUALITY / RETENTION VALUE
- HISTORIC TREES
 - GOOD quality BROADLEAVED
 - MEDIUM quality BROADLEAVED
 - POOR quality BROADLEAVED
 - MATURE BROADLEAVED
 - OVER MATURE BROADLEAVED
- OTHER BROADLEAVED WOODLAND AND INDIVIDUAL TREES
 - GOOD quality BROADLEAVED
 - MEDIUM quality BROADLEAVED
 - POOR quality BROADLEAVED
 - SEMI MATURE WOODLAND
 - MATURE WOODLAND
 - OVER MATURE WOODLAND
- CONIFEROUS WOODLAND
 - GOOD quality
 - MEDIUM quality
 - POOR quality
 - SEMI MATURE CONIFEROUS WOODLAND
 - MATURE CONIFEROUS WOODLAND
 - OVER MATURE CONIFEROUS WOODLAND
- OTHER
 - SCRUB & YOUNG MIXED WOODLAND



Reproduced from Ordnance Survey materials with the permission of the copyright of Her Majesty's Stationery Office under the License No. 186287

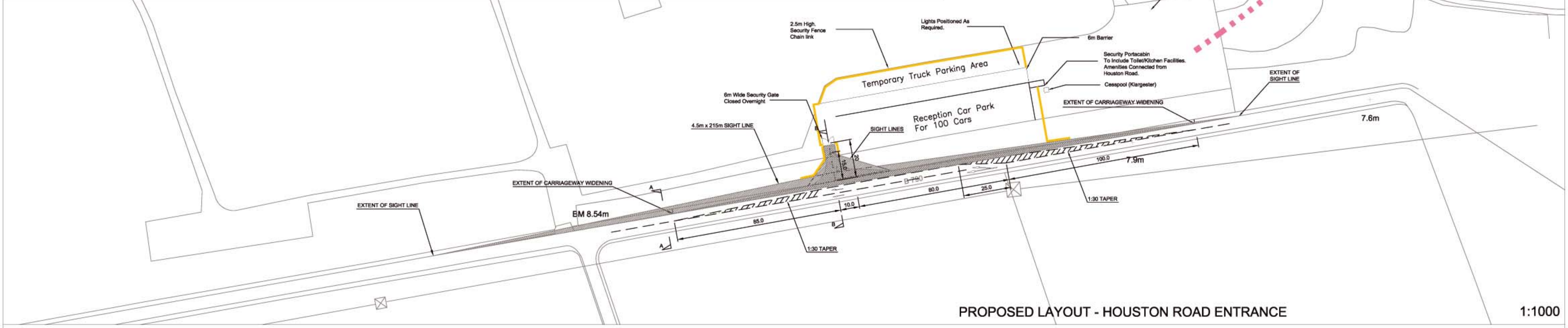
1:3000

EXISTING AND PROPOSED CROSS SECTION OF B790



SECTION A-A
SCALE VER 1:250
SCALE HOR 1:50

SECTION B-B
SCALE VER 1:250
SCALE HOR 1:50



PROPOSED LAYOUT - HOUSTON ROAD ENTRANCE

1:1000

NOTE
The Proposed Haul road route follows existing roads. Landscape features close to the proposed haul road route to be retained are shown on this drawing.
The total length of haul road = 3376m

Cass Associates Suite 104 The Toll Factory 82 Wood Street Liverpool L3 4 DG Tel: 0151 707 0110 Fax: 0151 707 0332 Email: info@cassassociates.co.uk	drawing title HAUL ROAD DETAILS	905/P/09
	scale AS SHOWN @ A0 date 11.10.06 dn KD	