

Approximate Site Location

Not to Scale

Based upon the Ordnance Survey Map with the sanction of the Stationary Office. Crown Copyright reserved. This map is for identification purposes only and should not be relied upon for accuracy.

FIGURE TITLE :

Groundwater Vulnerability Map

PROJECT :

M8 Junction, Site Investigation

REPORT NUMBER :

A0567-00-R2-1

BAE SYSTEMS

Legend

Uk Coastline

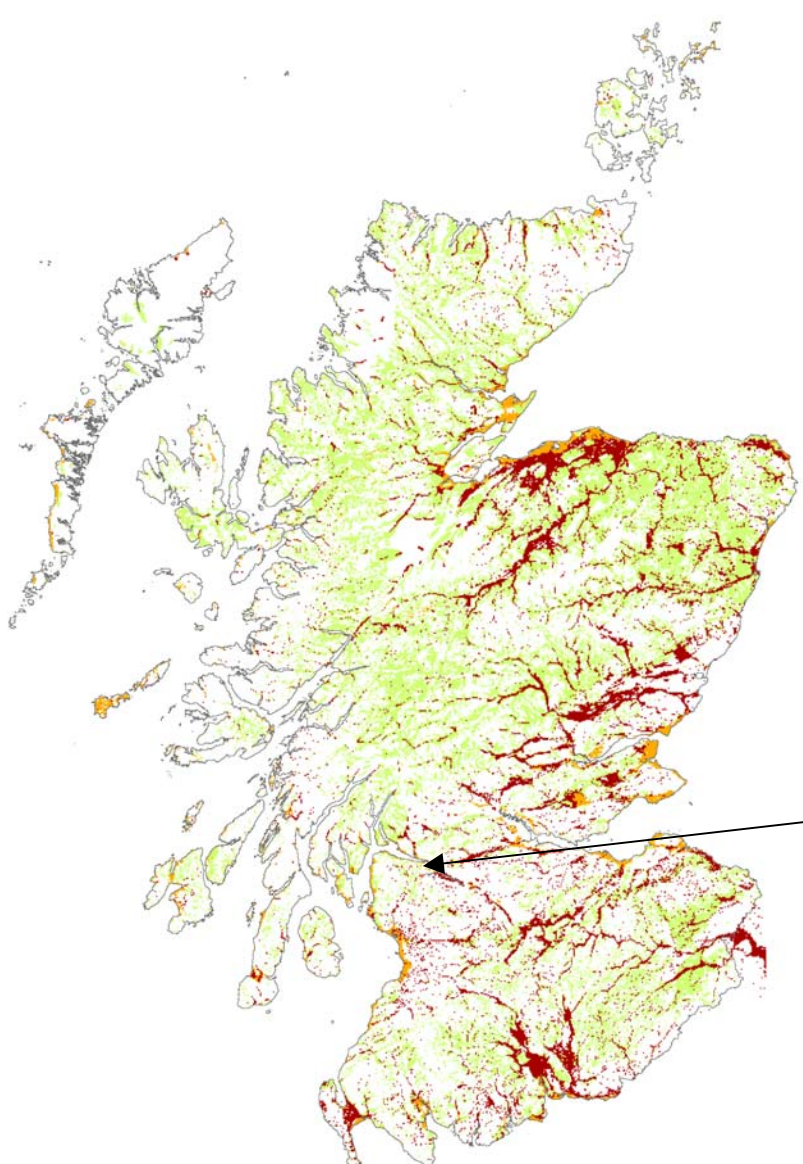
Superficial Aquifers

VALUE

- I H
- I M
- I L

DI = Dominantly intergranular flow
IF = Intergranular fracture flow
I = Intergranular flow
F = Fracture flow

VH = Very High productivity
H = High productivity
M = Moderate productivity
L = Low productivity



Approximate Site Location

Not to Scale

Based upon the Ordnance Survey Map with the sanction of the Stationary Office. Crown Copyright reserved. This map is for identification purposes only and should not be relied upon for accuracy.

FIGURE TITLE :

Superficial Aquifer Productivity Map

PROJECT :

M8 Junction, Site Investigation

REPORT NUMBER :

A0567-00-R2-1

BAE SYSTEMS


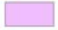




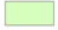



Legend

UK Coastline



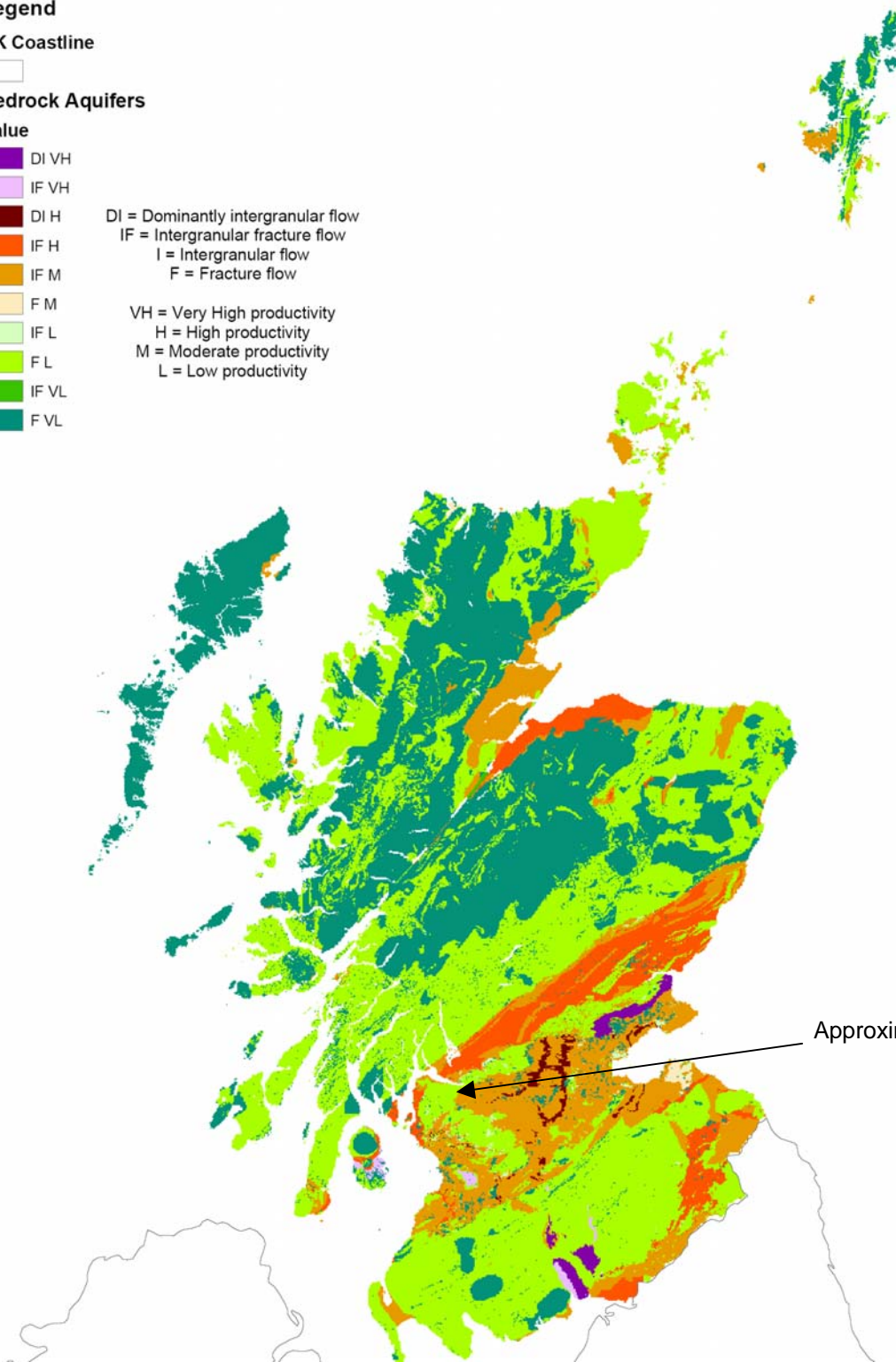
Bedrock Aquifers

Value

-  DI VH
-  IF VH
-  DI H
-  IF H
-  IF M
-  F M
-  IF L
-  F L
-  IF VL
-  F VL

DI = Dominantly intergranular flow
IF = Intergranular fracture flow
I = Intergranular flow
F = Fracture flow

VH = Very High productivity
H = High productivity
M = Moderate productivity
L = Low productivity



Approximate Site Location

Not to Scale

Based upon the Ordnance Survey Map with the sanction of the Stationary Office. Crown Copyright reserved. This map is for identification purposes only and should not be relied upon for accuracy.

FIGURE TITLE :

Bedrock Aquifer Productivity Map

PROJECT :

M8 Junction, Site Investigation

REPORT NUMBER :

A0567-00-R2-1

BAE SYSTEMS