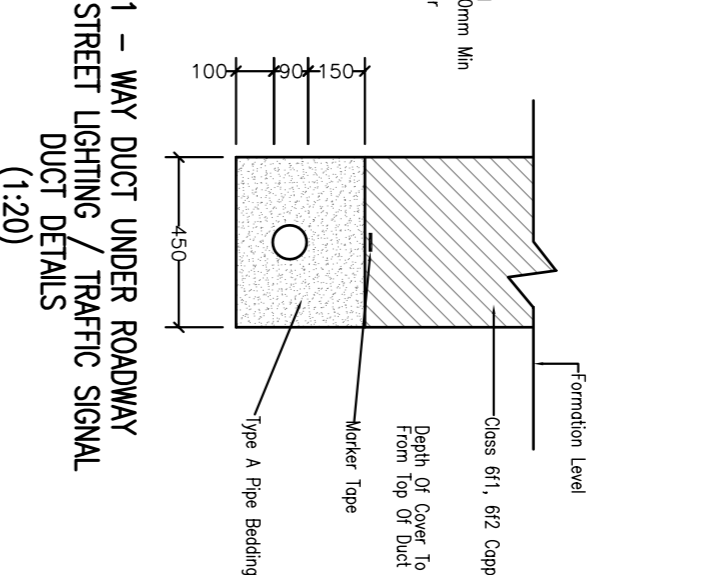
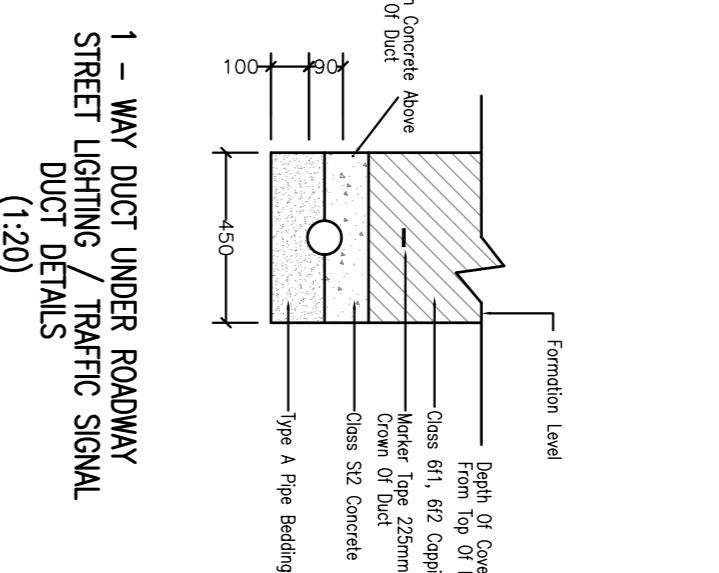
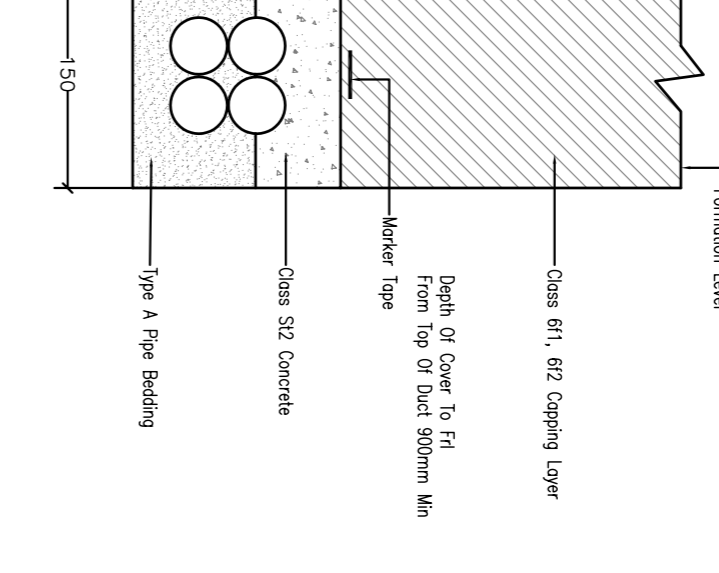
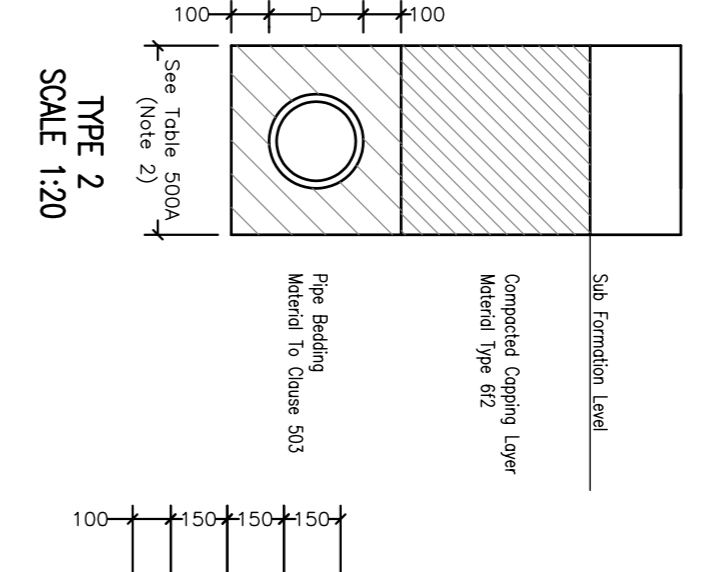
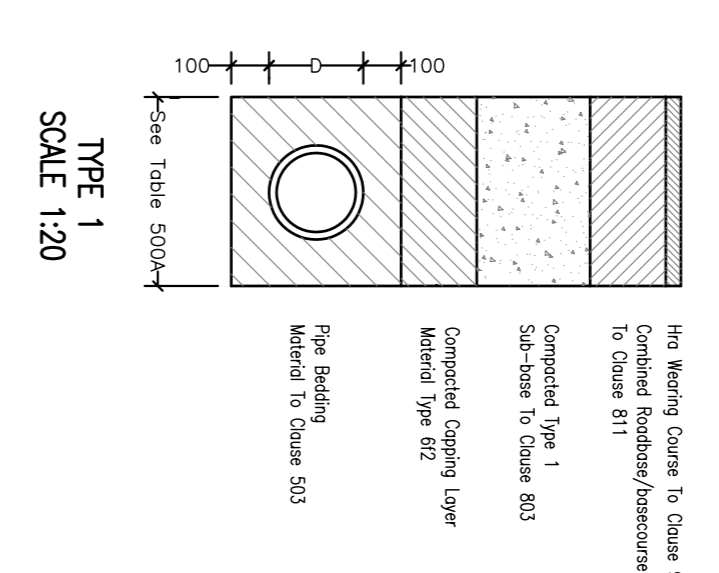


- NOTES**
1. ALL CONSTRUCTION DETAILS TO COMPLY WITH BRENFRESHIRE COUNCIL, ROADS DEVELOPMENT GUIDE AND THE DESIGN MANUAL FOR ROADS AND BRIDGES.
 2. THE SPECIFICATION FOR THIS PROJECT IS THE SPECIFICATION FOR HIGHWAY WORKS.
 3. MANHOLE AND CATCHPIT TO HAVE 150mm CONCRETE SURROUND.
 4. THESE DETAILS GENERALLY REFER TO BRENFRESHIRE COUNCIL PROPOSED ADOPTION WORKS. FOR ON RAMP DETAILS REFER TO HIGHWAY CONSTRUCTION DETAILS FOR SPECIFICATION AND DETAILS.



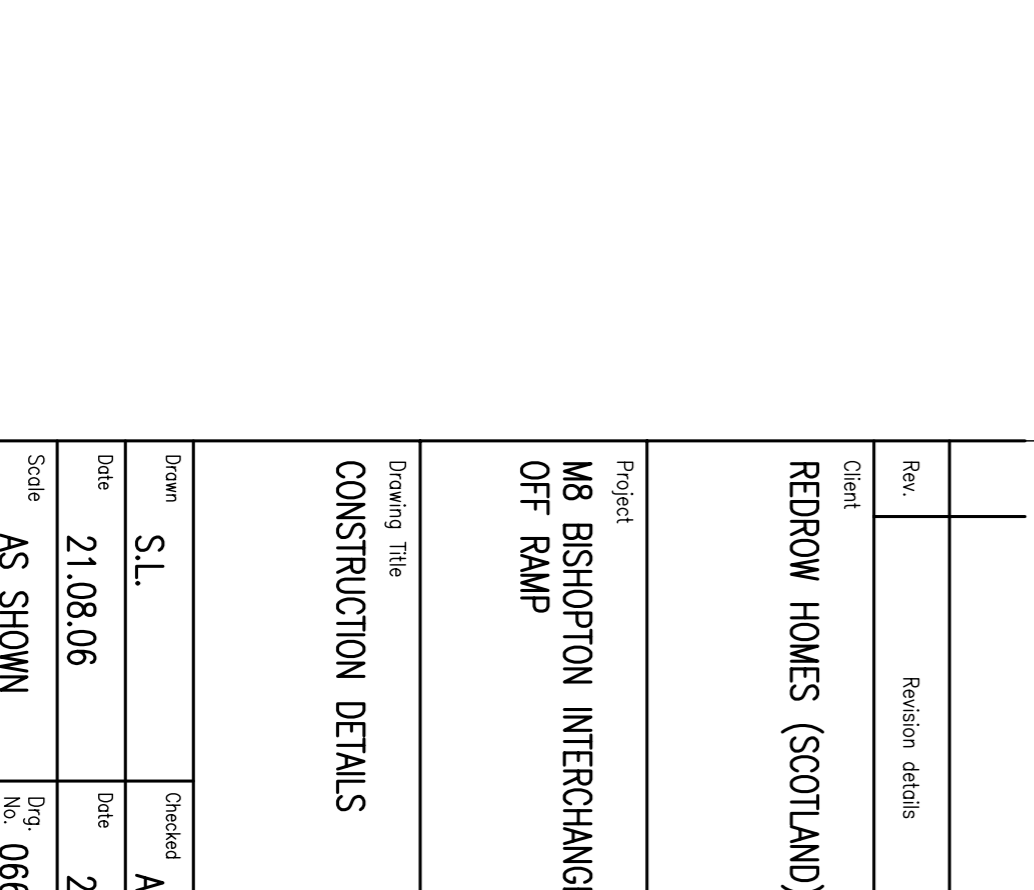
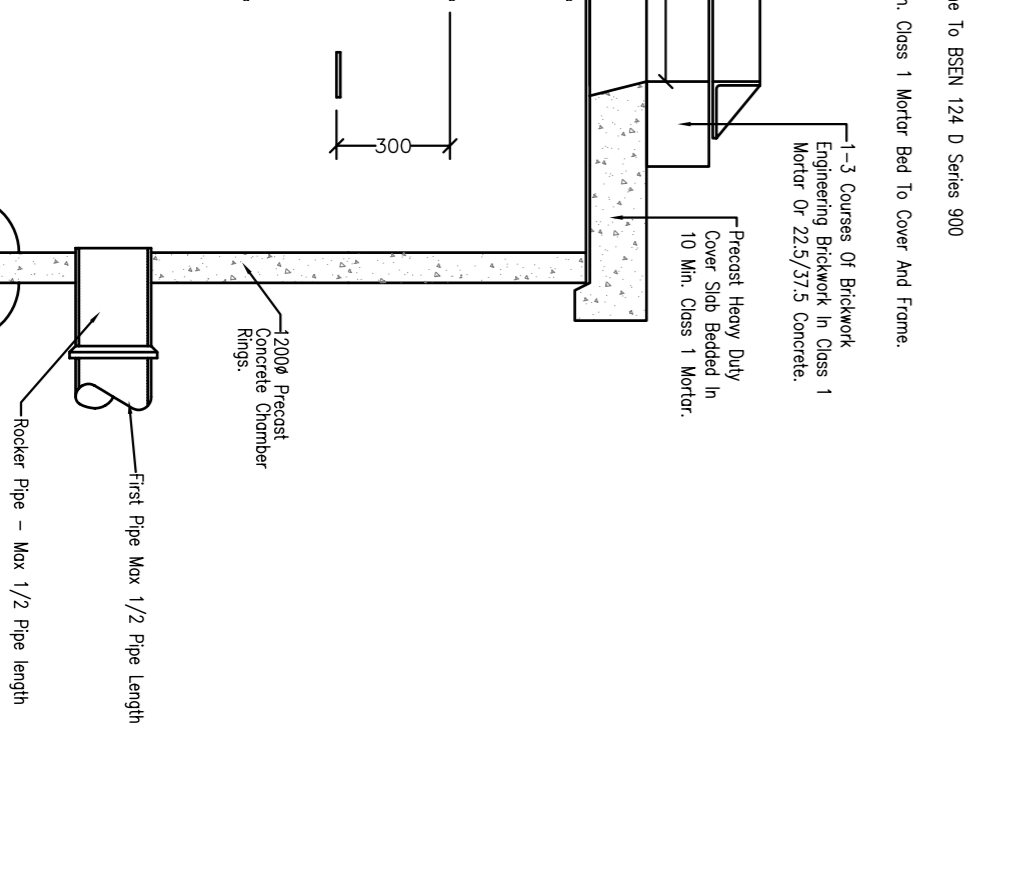
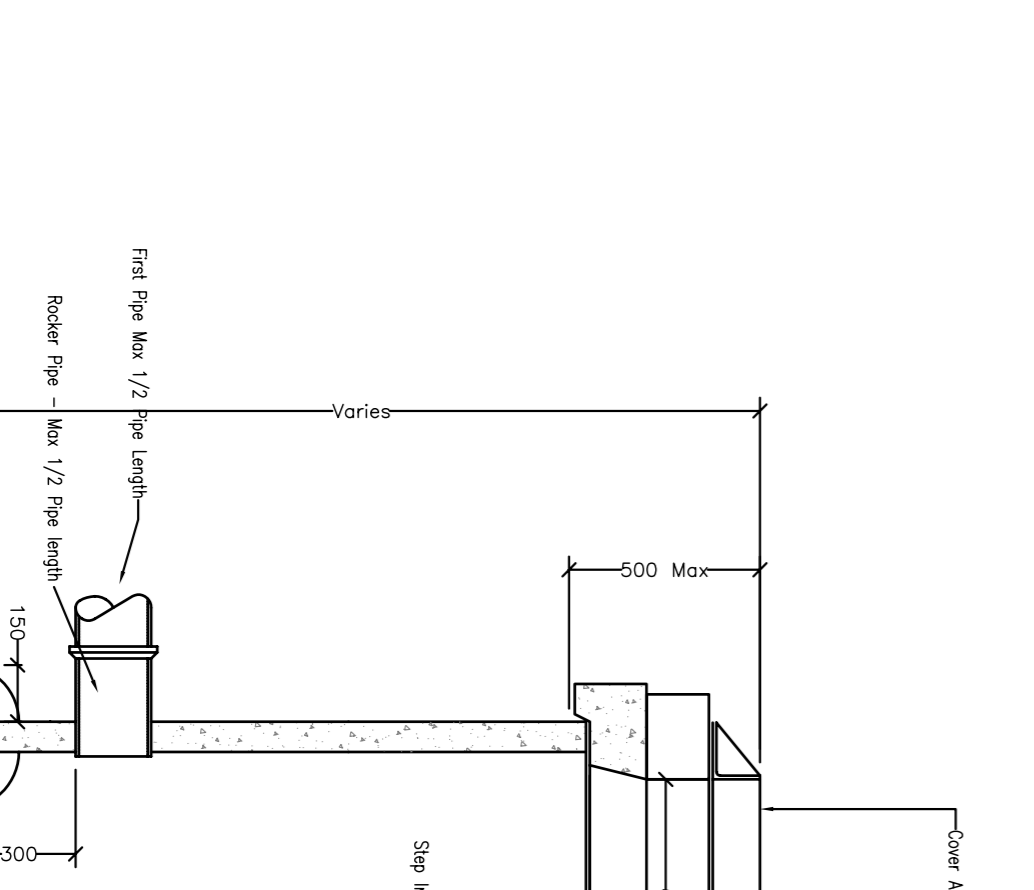
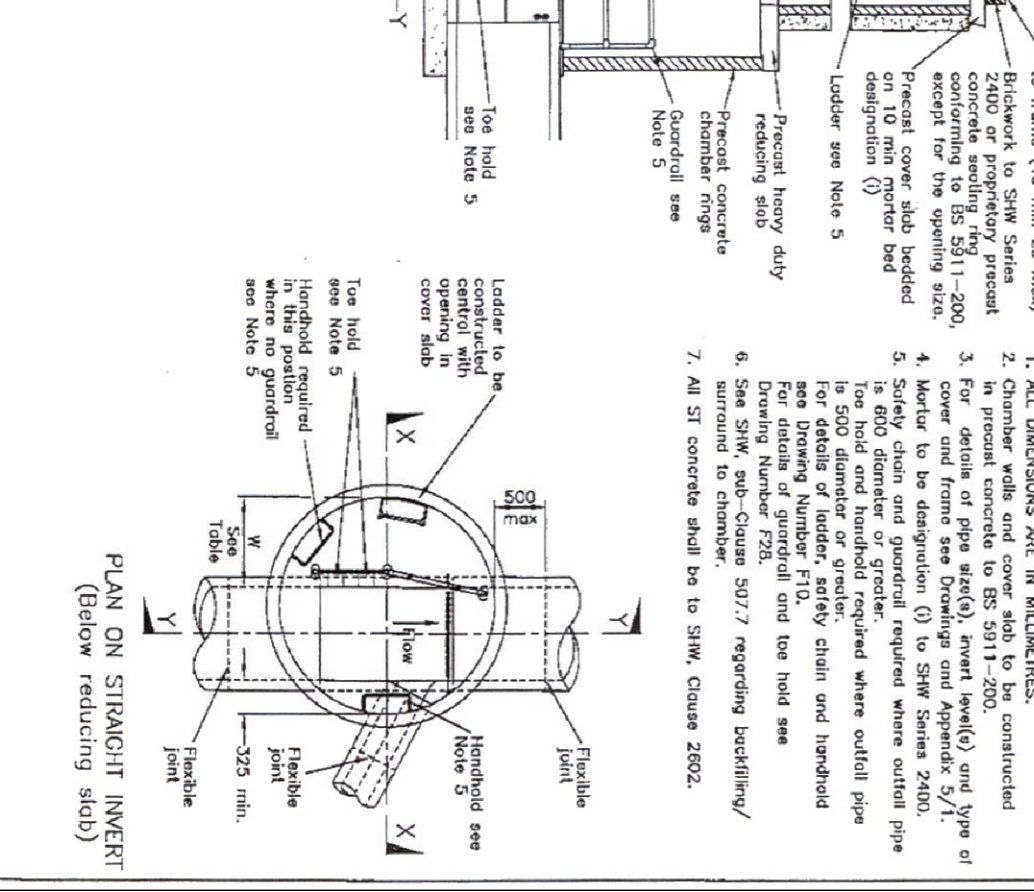
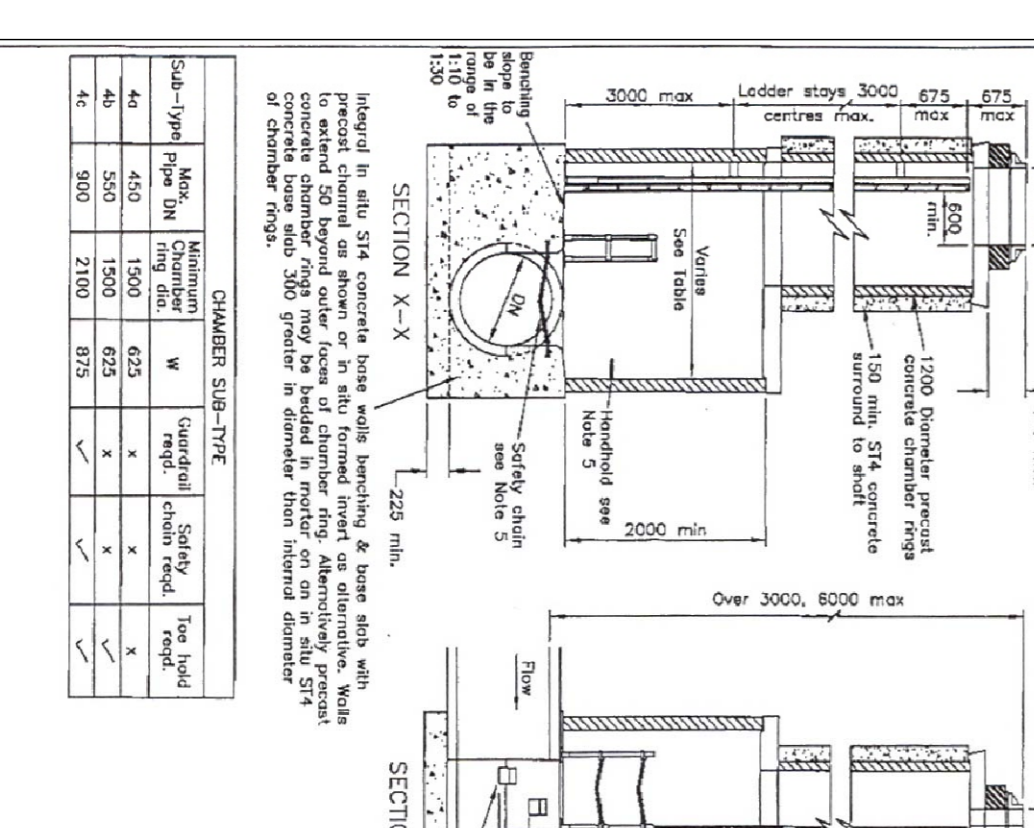
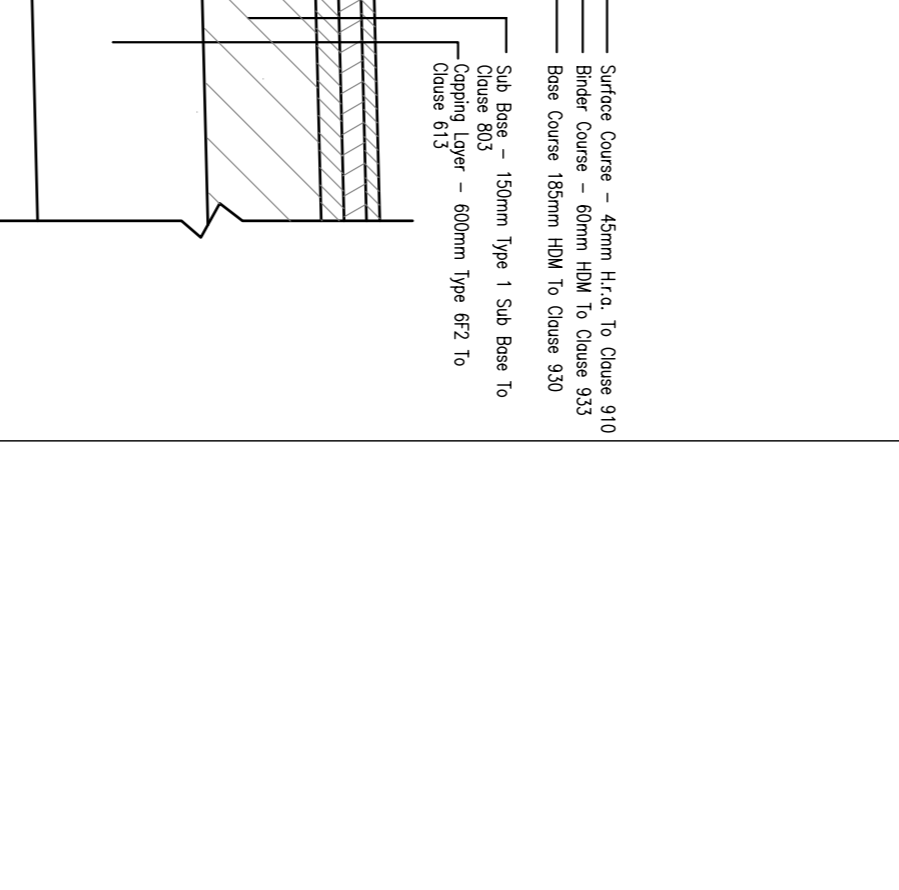
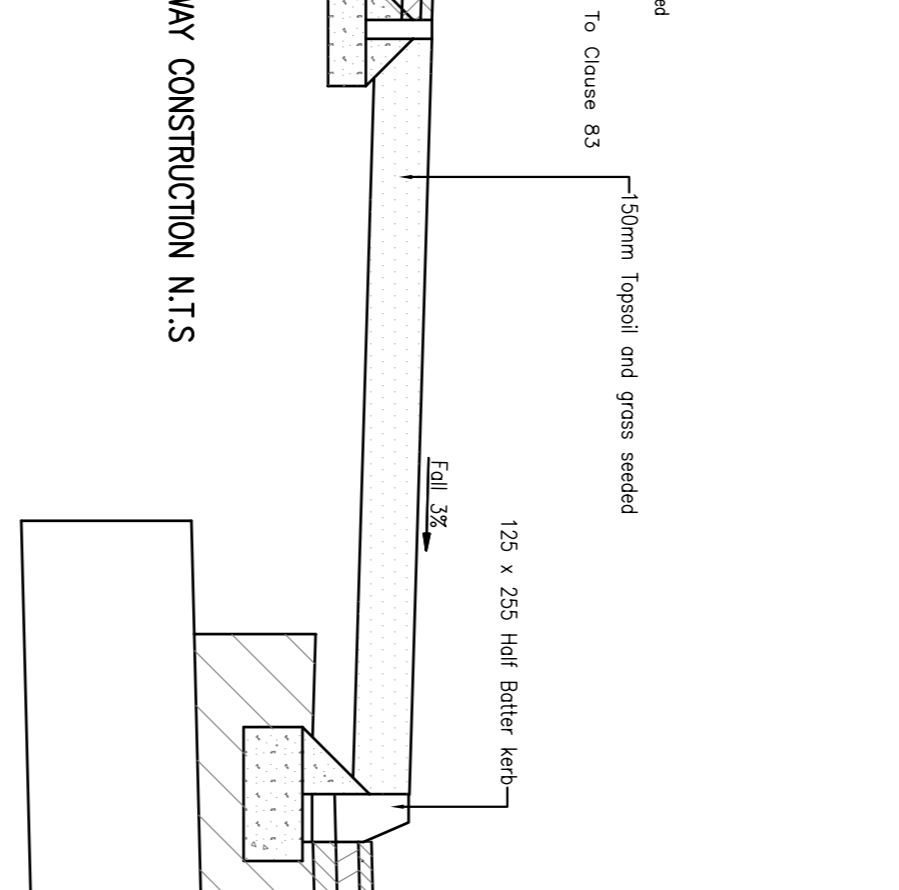
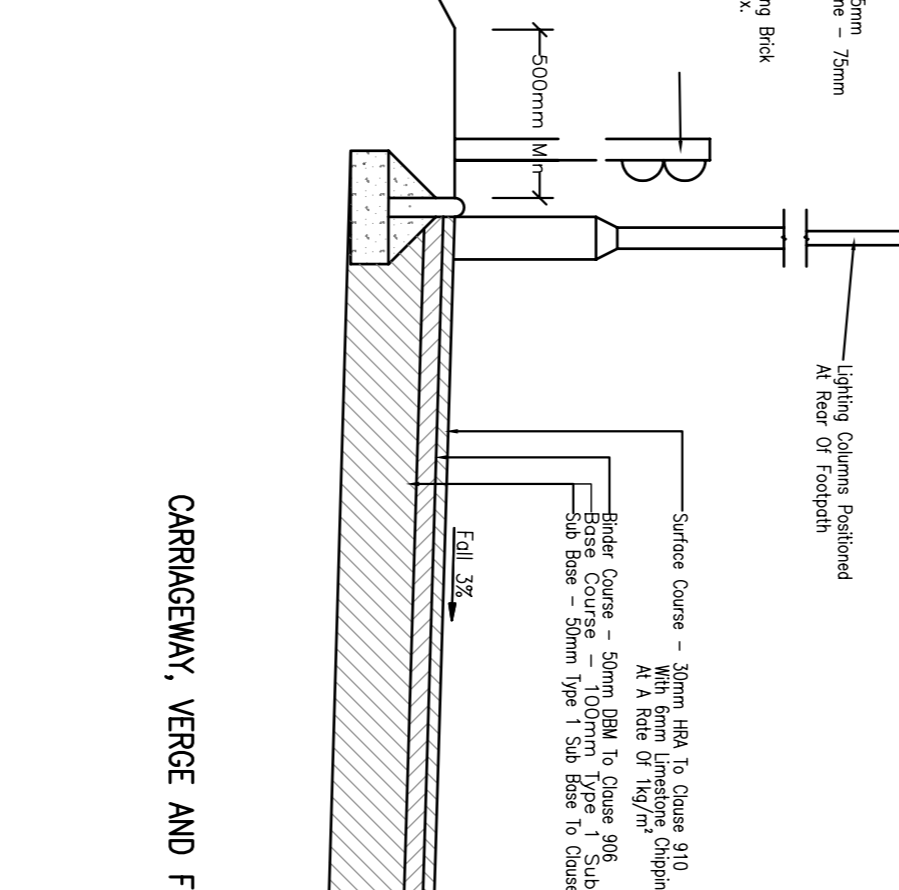
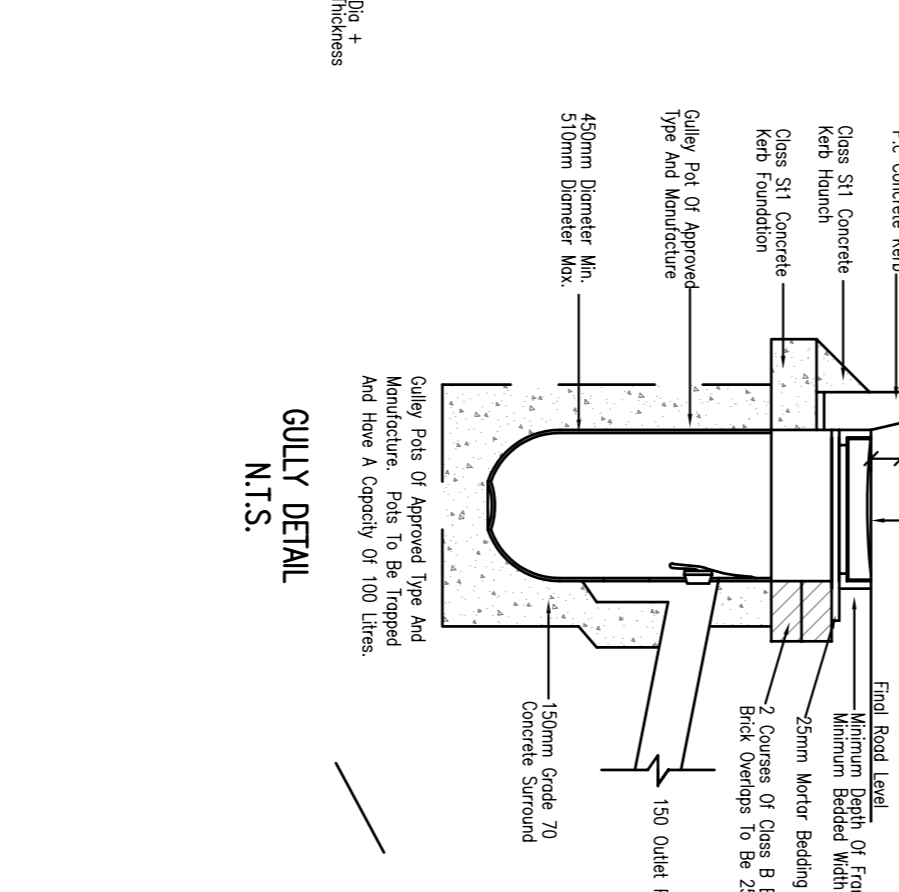
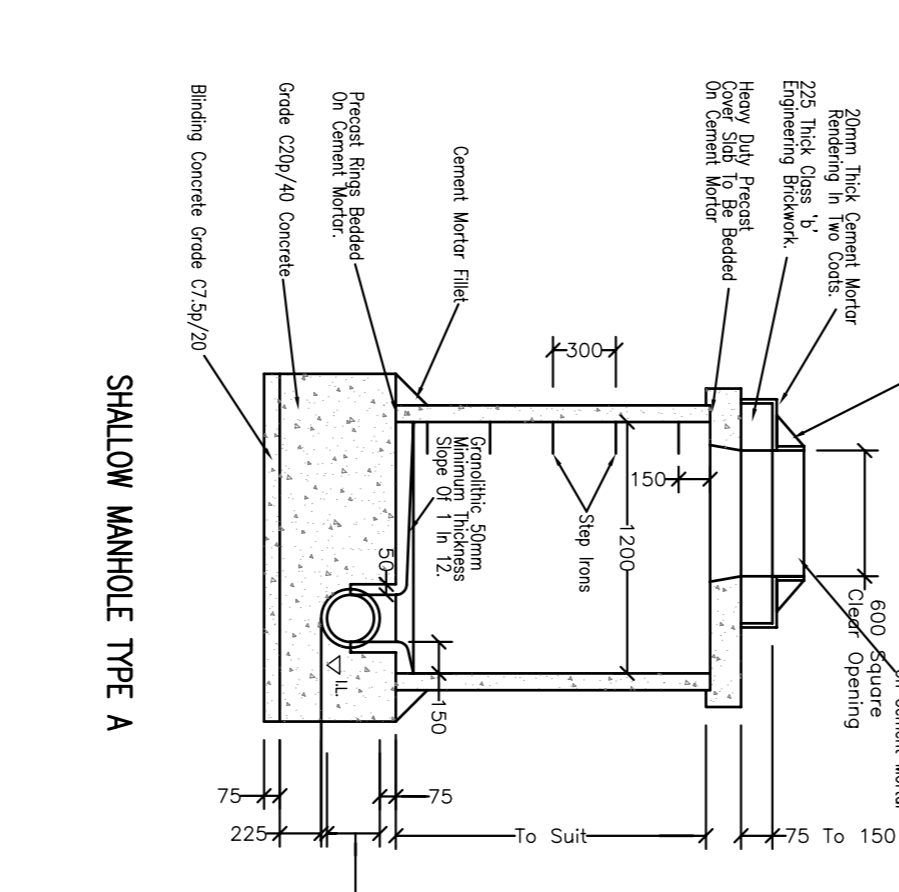
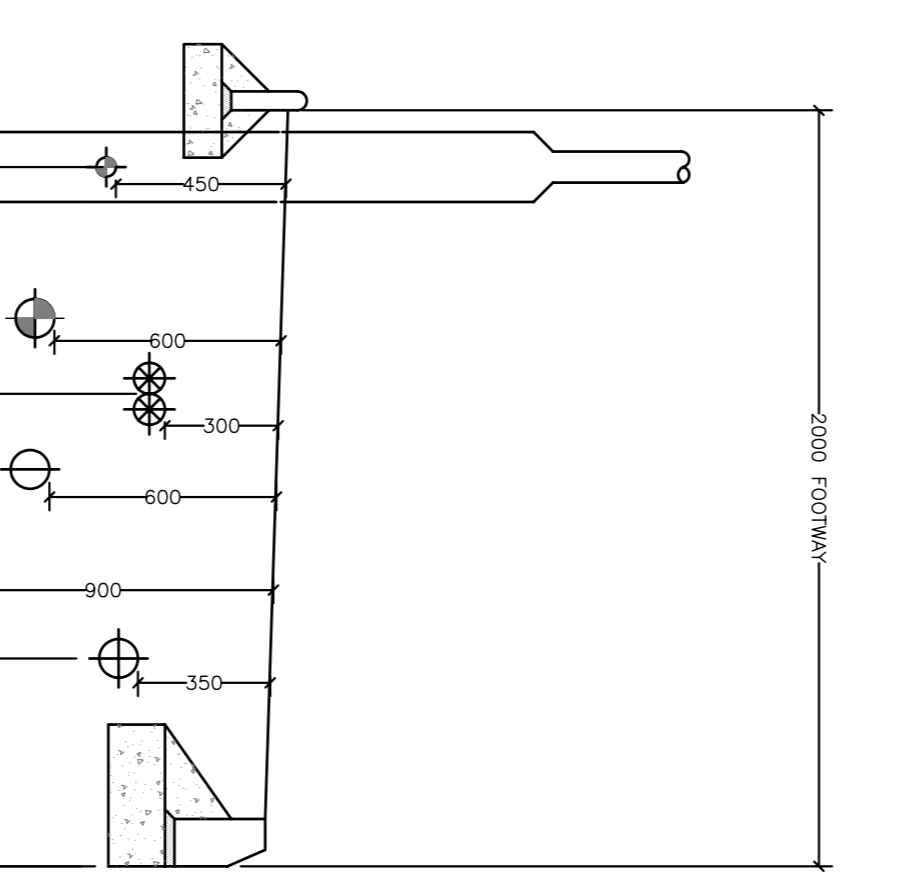
TRENCH REINSTATEMENT DETAILS
Type 1 - Under Existing Carriageways
Type 2 - Under New Carriageways

SCOTTISH POWER DUCT CROSSINGS
(1:20)

1 - WAY DUCT UNDER ROADWAY STREET LIGHTING / TRAFFIC SIGNAL DUCT DETAILS
(1:20)

1 - WAY DUCT UNDER ROADWAY STREET LIGHTING / TRAFFIC SIGNAL DUCT DETAILS
(1:20)

TYPICAL CARRIAGEWAY AND FOOTWAY INTEGRAL CONSTRUCTION



| From | Checked | Scale | Date |
|----------|---------|-------------------|----------|
| S.L. | AAT | 21.08.06 | 21.08.06 |
| AS SHOWN | | No. 06614/100/206 | |

DO NOT scale from this drawing

DBA

Project: **M8 BISHOPTON INTERCHANGE OFF-RAMP**

Client: **REDROW HOMES (SCOTLAND) LTD**

Consulting Engineers: **DOTGALL BAILLIE ASSOCIATES**

2, Ashfield Road, East Kilbride G75 0QA, Tel: 01355 286480 Fax: 01355 221951