

REPRODUCED FROM SHEET 30E&W 1:50 000 SERIES 1989& 1994 BY PERMISSION OF THE BRITISH GEOLOGICAL SURVEY. IPR/28-32C CSL. NERC COPYRIGHT ALL RIGHTS RESERVED. THIS MAP IS FOR IDENTIFICATION PURPOSES ONLY AND SHOULD NOT BE RELIED UPON FOR ACCURACY.

FIGURE TITLE :

Figure 4a - Solid Geology

PROJECT :

Bishopton

REPORT NUMBER :

A138-00-R1-1



LLGS	<b>Lower Limestone Formation:</b> mainly mudstones with sandstones, siltstones, marine limestones, thin coals and clayband ironstones
ULGS	<b>Upper Limestone Formation:</b> cyclic sequences of sandstones, siltstones, mudstones, marine limestones, coals and seatrocks
LSC	<b>Limestone Coal Formation:</b> cyclic sequences of sandstones, siltstones, mudstones, coals, blackband and clayband ironstones and seatrocks
LWM	<b>Lawmuir Formation:</b> mainly sandstones, especially in lower part, with siltstones, mudstones, marine and non-marine limestones, coals and seatearths
BGN	<b>Ballagan Formation:</b> grey silty mudstone with numerous thin beds of nodular dolomitic limestone ('cementstone'); sandstones occur in lower part
KNW	<b>Kinnesswood Formation:</b> red and white cross-bedded sandstones with nodules and beds of pedogenic limestone ('cornstone'); pebbly in places. The lower part of the formation may be of Devonian age
W	Trachybasalt; <i>W<sup>M</sup></i> Mugearite; <i>WB</i> Trachybasalt with subordinate basalt
<i>B<sup>J</sup></i>	Microporphyritic olivine-basalt, basaltic hawaiite and hawaiite of Jedburgh type
<i>B<sup>Du</sup></i>	Macroporphyritic olivine-basalt of Dunsapie type
<i>B<sup>Ck</sup></i>	Macroporphyritic olivine-basalt of Craiglockhart type (ankaramite)
Z	Tuff and agglomerate with some volcaniclastic and clastic sediments in places
<i>D<sup>T</sup></i>	Ophitic alkali olivine-dolerite; <i>D<sup>B</sup></i> - Barkevikite; <i>D<sup>T</sup></i> -Teschenite
<i>D</i>	Olivine-dolerite and olivine-basalt; <i>D<sup>J</sup></i> - Jedburgh type; <i>D<sup>D</sup></i> - Dalmeny type; <i>D<sup>M</sup></i> - Markle type; <i>D<sup>Du</sup></i> - Dunsapie type; <i>D<sup>Ck</sup></i> - Craiglockhart type
V	Agglomerate in vents, may include rafts of country rock
LWM	<b>Lawmuir Formation:</b> sandstones, siltstones, mudstones and seatrocks; a few coal seams and marine limestones. Much sandstone, commonly pebbly, in lower part; cyclic sequences predominate in upper part
LSC	<b>Limestone Coal Group (undivided):</b> cyclic sequences of sandstones, siltstones, mudstones, coals and seatrocks, and a few thin limestones
W	Intermediate lavas of the alkali olivine-basalt series (unclassified); <i>WT</i> Trachybasalt; <i>WM</i> Mugearite
<i>fBW</i>	Macroporphyritic feldspar-phyrlic lavas with compositions in the range basalt - basaltic hawaiite - hawaiite (unclassified Markle lavas)
<i>BM</i>	Macroporphyritic olivine-basalt of Markle type
<i>BD</i>	Microporphyritic olivine-basalt of Dalmeny type; <i>BH</i> Olivine-basalt of Hillhouse type
BGN	<b>Ballagan Formation:</b> grey silty mudstones and numerous thin beds of nodular dolomitic limestone ('cementstone'). Sandstone beds in lower part
KNW	<b>Kinnesswood Formation:</b> white and red cross-bedded sandstones and red-brown siltstones with nodules and beds of pedogenic limestone ('cornstone'). The oldest part of the formation may be of Devonian age
<i>Q<sup>D</sup></i>	Quartz-dolerite

REPRODUCED FROM SHEET 30 1:50 000 SERIES 1993 BY PERMISSION OF THE BRITISH GEOLOGICAL SURVEY  
IPR/28-32C CSL. NERC COPYRIGHT ALL RIGHTS RESERVED.  
THIS MAP IS FOR IDENTIFICATION PURPOSES ONLY AND SHOULD NOT BE RELIED UPON FOR ACCURACY.

FIGURE TITLE :

## Figure 4b - Solid Geology - Key (1)

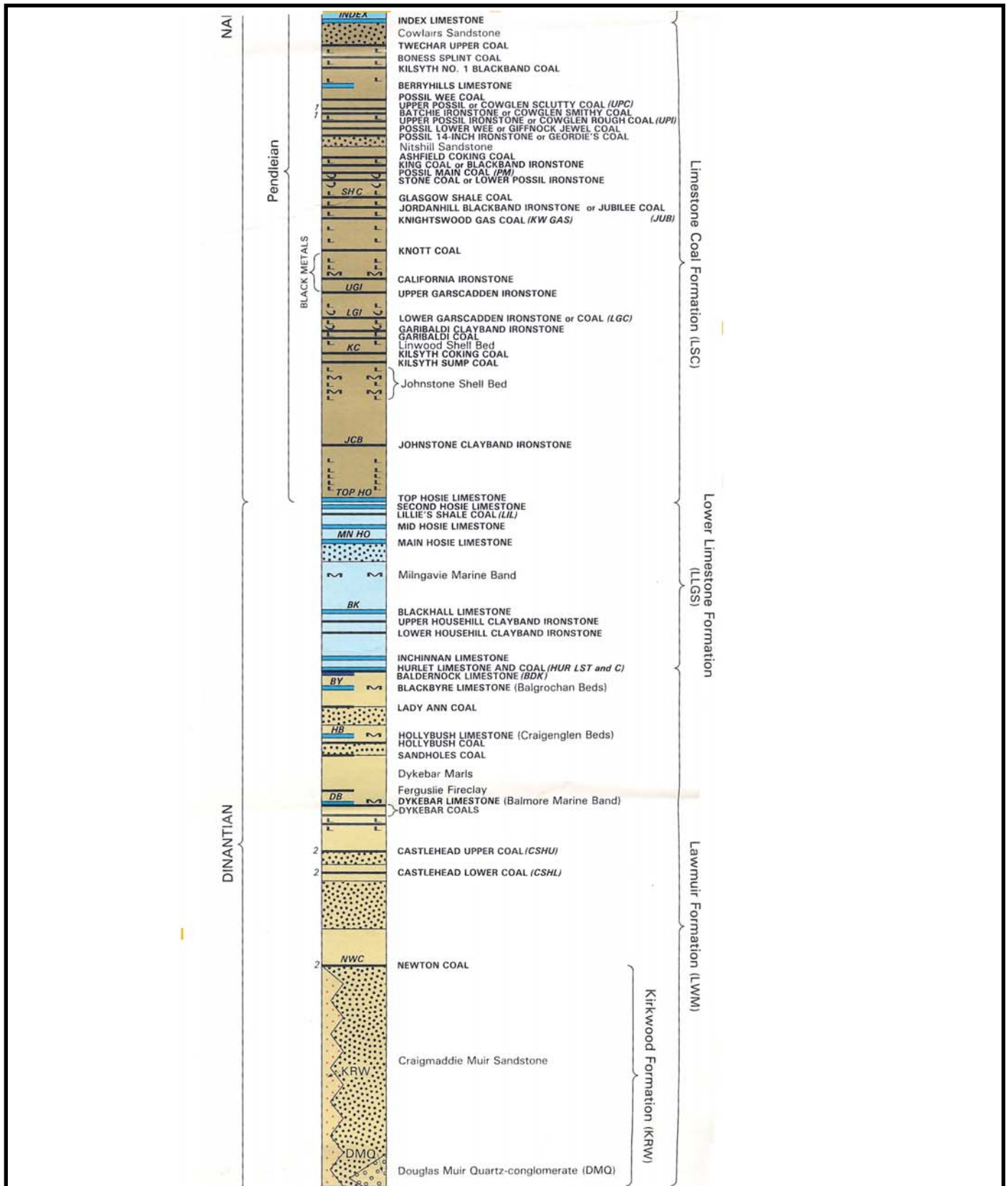
PROJECT :

Bishopton

REPORT NUMBER :

A138-00-R1-1

**BAE SYSTEMS**



REPRODUCED FROM SHEET 30 1:50 000 SERIES 1993 BY PERMISSION OF THE BRITISH GEOLOGICAL SURVEY  
IPR/28-32C CSL. NERC COPYRIGHT ALL RIGHTS RESERVED.  
THIS MAP IS FOR IDENTIFICATION PURPOSES ONLY AND SHOULD NOT BE RELIED UPON FOR ACCURACY.

FIGURE TITLE :

Figure 4c - Solid Geology - Key (2)

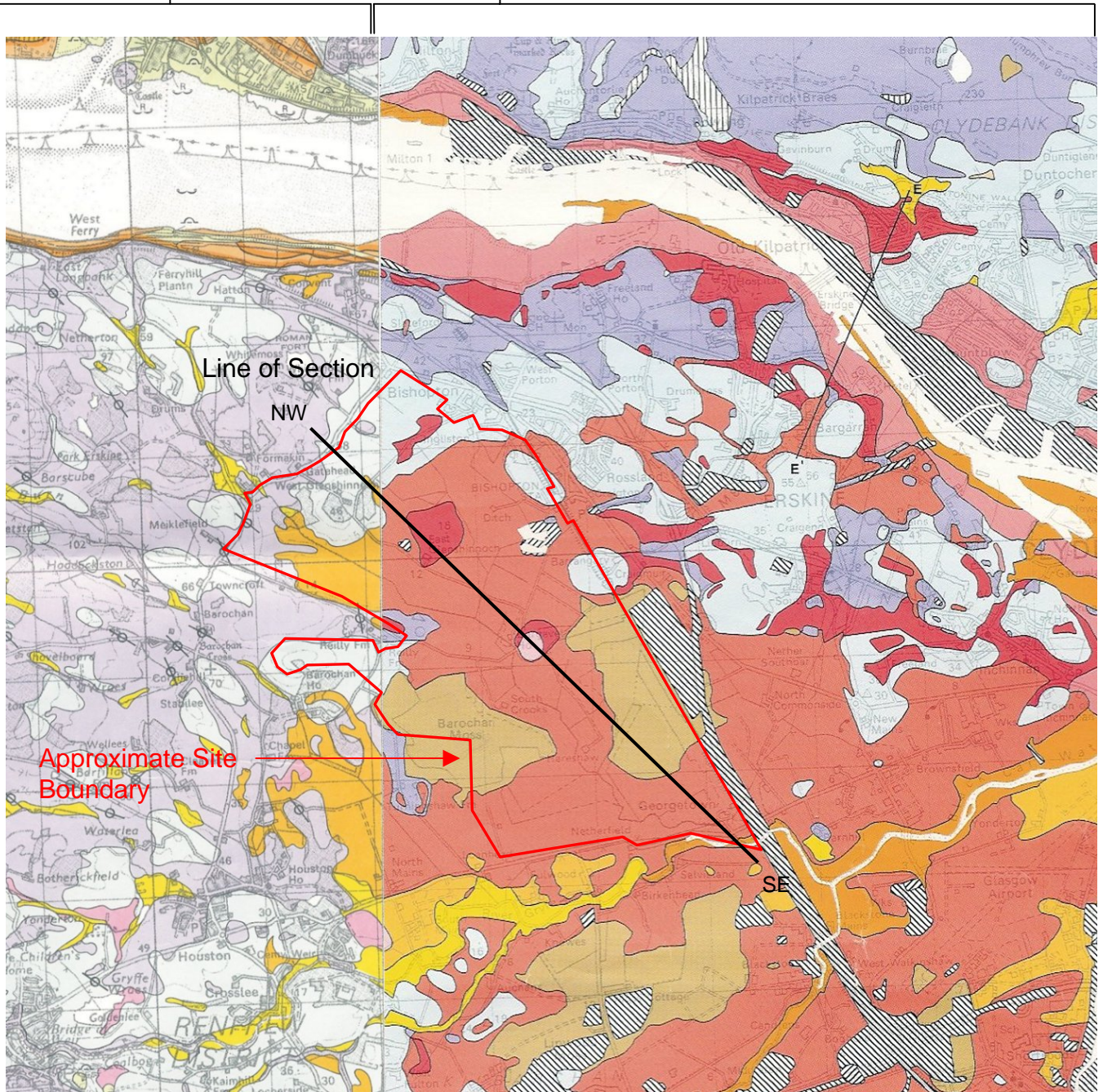
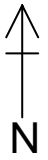
PROJECT :

Bishopston

REPORT NUMBER :

A138-00-R1-1

**BAE SYSTEMS**



REPRODUCED FROM SHEET 30E&W 1:50 000 SERIES 1989& 1994 BY PERMISSION OF THE BRITISH GEOLOGICAL SURVEY  
IPR/28-32C CSL. NERC COPYRIGHT ALL RIGHTS RESERVED.  
THIS MAP IS FOR IDENTIFICATION PURPOSES ONLY AND SHOULD NOT BE RELIED UPON FOR ACCURACY.

FIGURE TITLE :

### Figure 4d - Superficial Deposits

PROJECT :

Bishopton

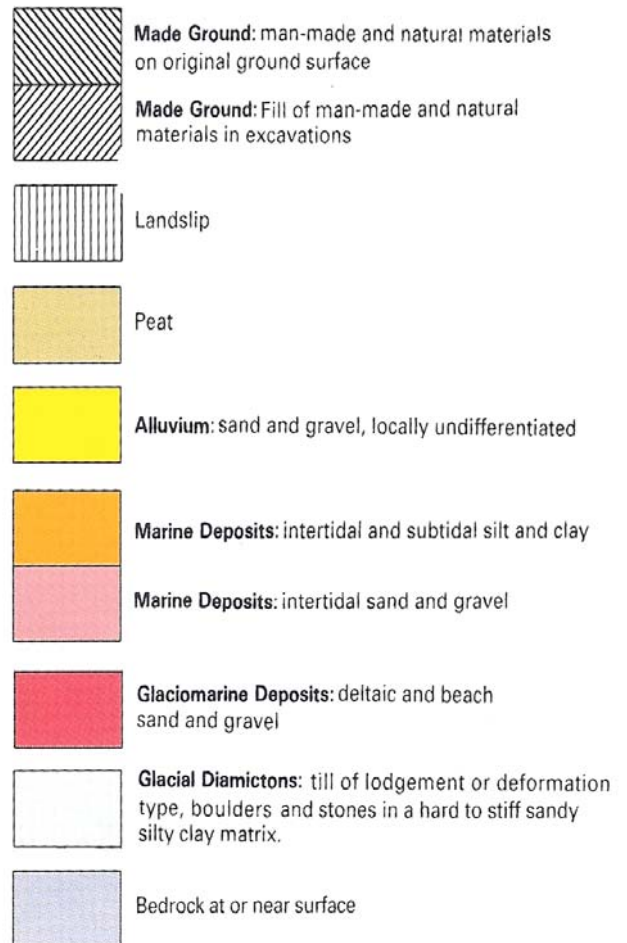
REPORT NUMBER :

A138-00-R1-1



Sheet 30 W 1989

Sheet 30 E 1994



REPRODUCED FROM SHEET 30E&W 1:50 000 SERIES 1989& 1994 BY PERMISSION OF THE BRITISH GEOLOGICAL SURVEY  
 IPR/28-32C CSL. NERC COPYRIGHT ALL RIGHTS RESERVED.  
 THIS MAP IS FOR IDENTIFICATION PURPOSES ONLY AND SHOULD NOT BE RELIED UPON FOR ACCURACY.

FIGURE TITLE : **Figure 4e - Superficial Geology - Key**

PROJECT : **Bishopton**

REPORT NUMBER : **A138-00-R1-1**

