

Figure 15.1 Zone 1 NMRS Sites

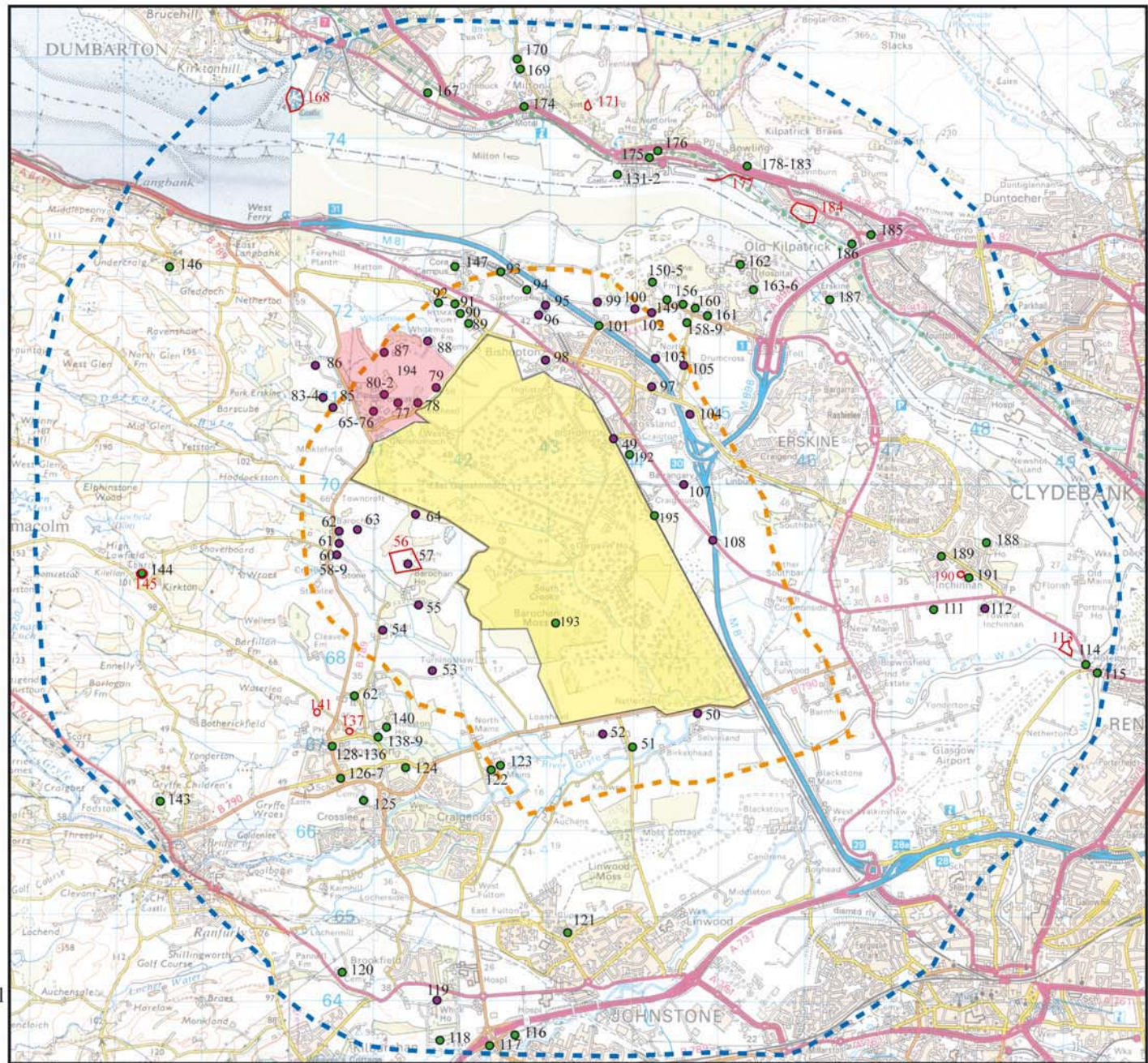
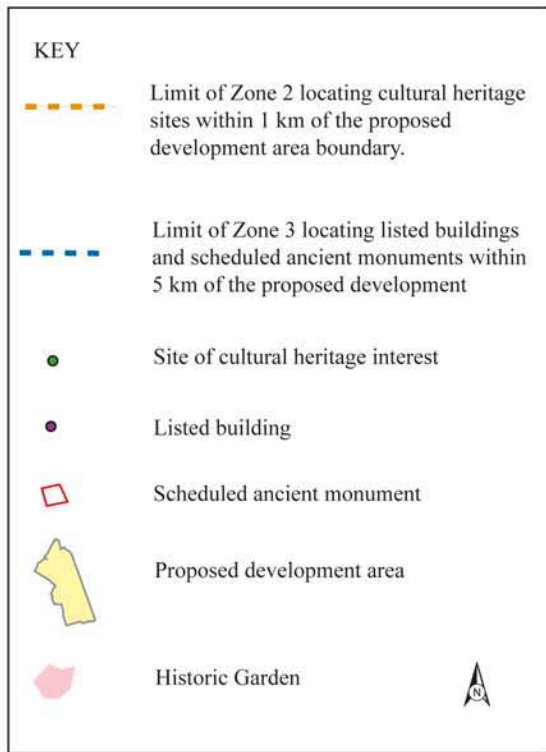


Figure 15.2 Site location plan showing sites of cultural heritage interest in Zone 2 and listed buildings and scheduled ancient monuments in Zone 3

Reproduced from the Ordnance Survey 1:50000 scale map with the permission of the Controller of Her Majesty's Stationary Officer. Crown copyright. AOC Archaeology Group, Edgefield Industrial Estate, Loanhead, Midlothian, EH 20 9SY. OS Licence no. AL 100016114.



Figure 15.3 Extract from map by Pont, 1583-96

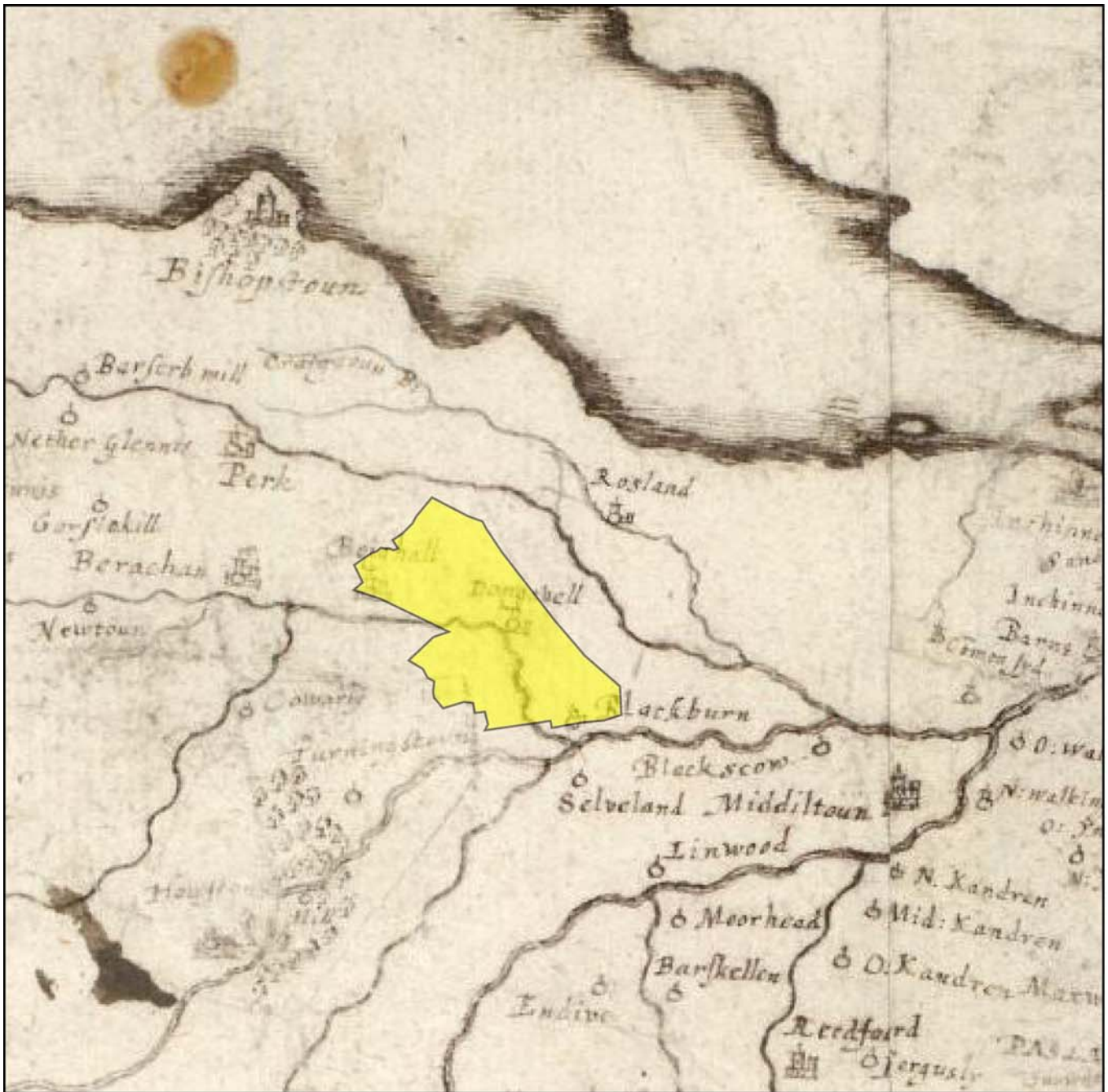


Figure 15.4 Extract from map by Gordon, 1636-52



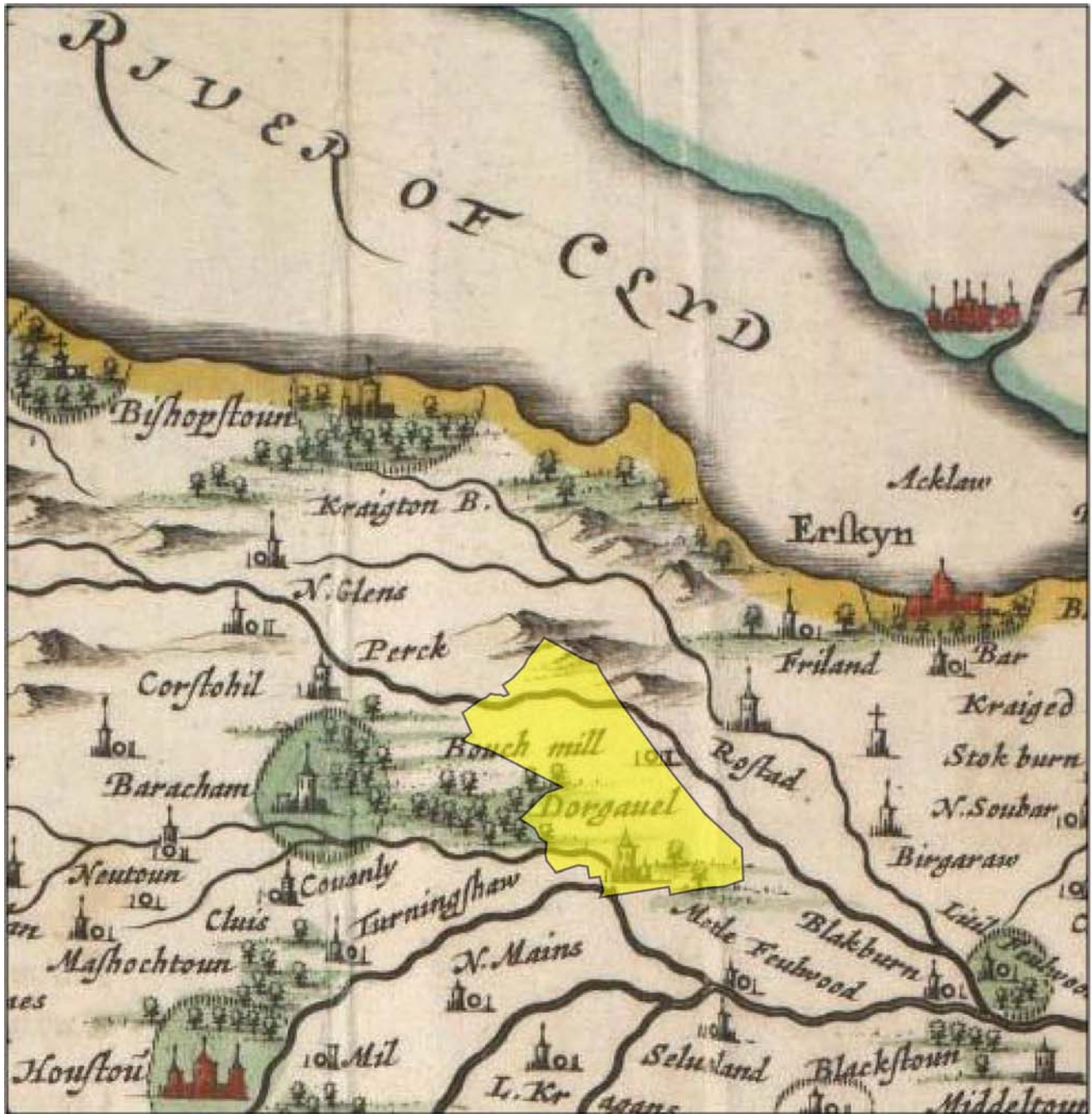


Figure 15.5 Extract from map by Blaeu, 1654

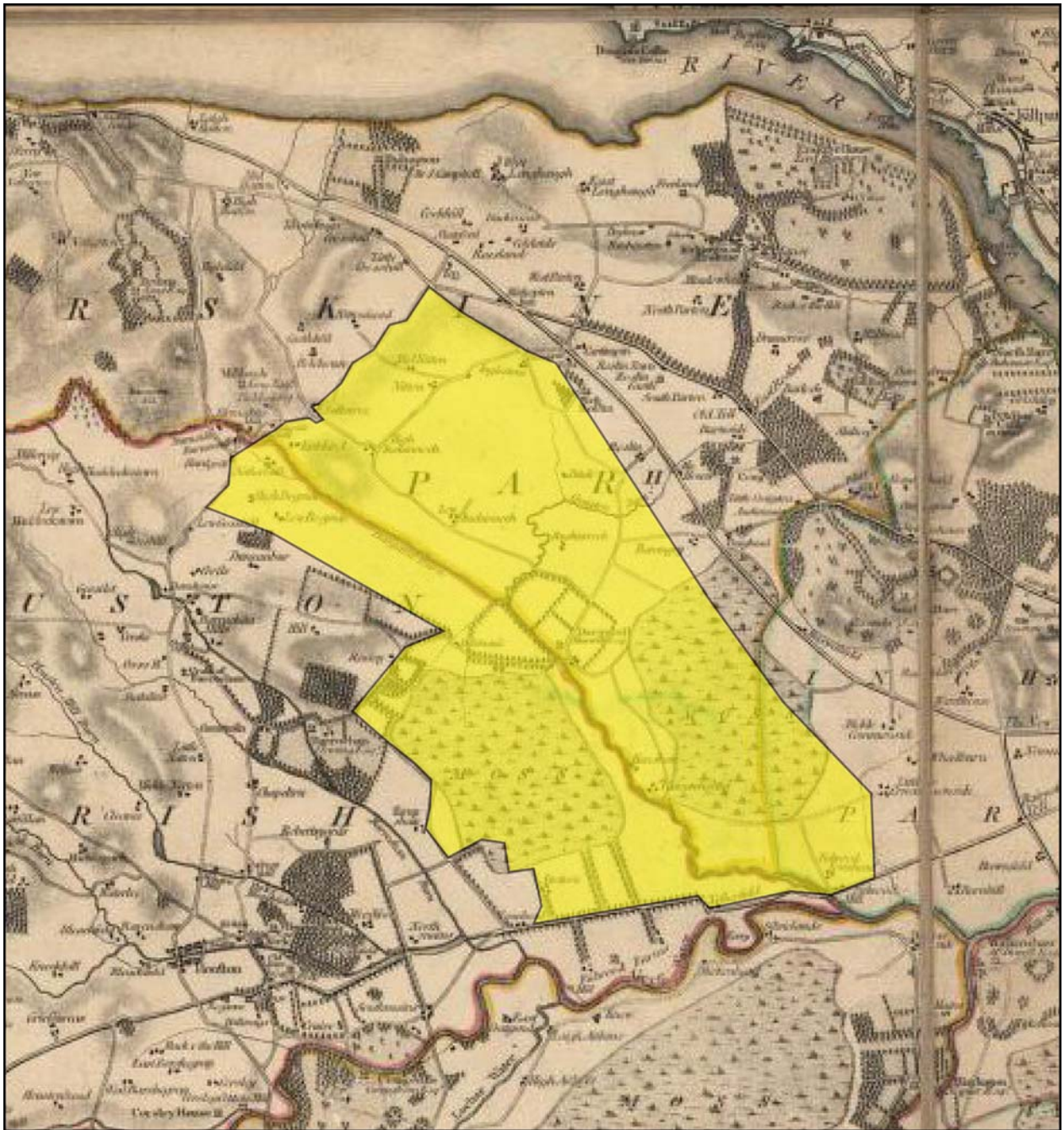


Figure 15.6 Extract from map by Ainslie, 1796



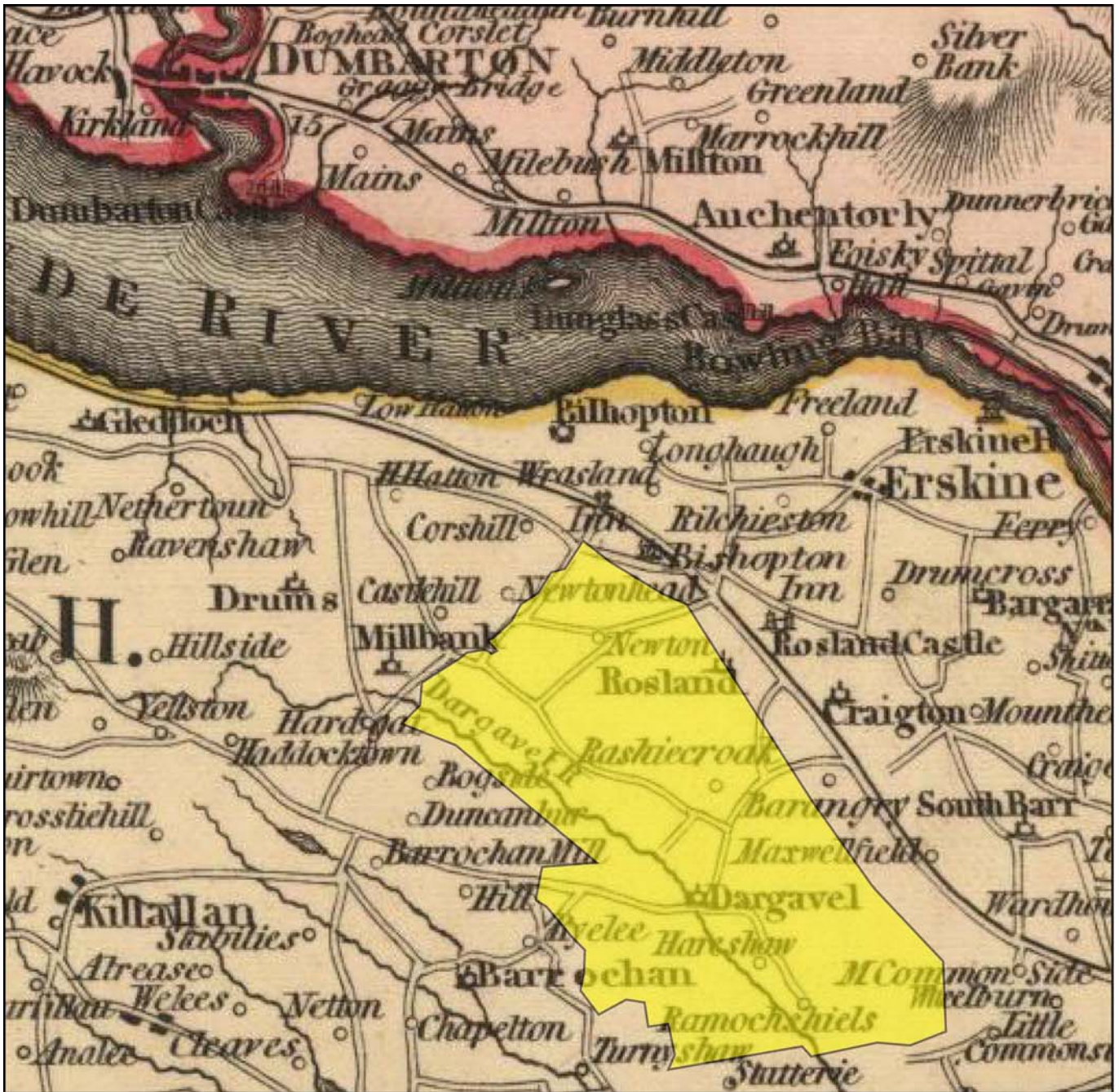


Figure 15.8 Extract from map by Ainslie, 1821