

NOTES

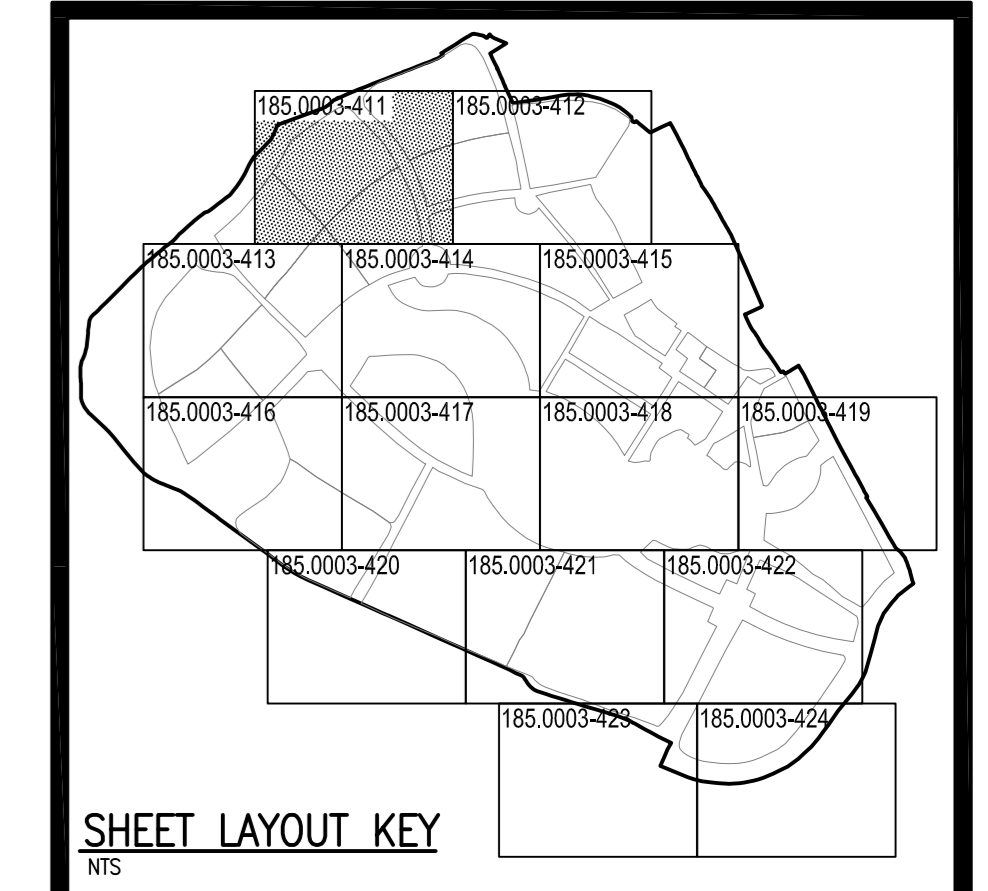
- THIS DRAWING IS TO BE READ IN CONJUNCTION WITH ALL RELEVANT ENGINEERING AND ARCHITECTURAL DRAWINGS, DETAILS AND SPECIFICATIONS.
- ANY DISCREPANCIES ON THIS DRAWING ARE TO BE REPORTED IMMEDIATELY TO THE DESIGN ENGINEER FOR CLARIFICATION.
- THE CONTRACTOR IS RESPONSIBLE FOR ALL TEMPORARY WORKS AND FOR THE STABILITY OF THE WORKS IN PROGRESS.
- ALL EXISTING DRAINAGE AFFECTED BY PROPOSED WORK MUST BE CONFIRMED ON SITE PRIOR TO WORKS COMMENCING.
- ALL ADAPTABLE FOUL AND SURFACE WATER DRAINAGE MUST BE CONSTRUCTED IN ACCORDANCE WITH SEWERS FOR SCOTLAND SECOND EDITION.
- ALL SEWER PIPE AND MANHOLES TO BE CLEANED AND TESTED FOR WATER TIGHTNESS ON COMPLETION OF CONSTRUCTION.
- ALL DRAINAGE WORKS SHALL BE CARRIED OUT IN ACCORDANCE WITH THE REQUIREMENTS OF BUILDING REGULATIONS AND IN CONJUNCTION WITH ALL RELEVANT BRITISH STANDARDS, CODES OF PRACTICE AND 'SEWERS FOR SCOTLAND SECOND EDITION'.
- ALL DRAINAGE SHALL COMPLY WITH THE UPTON MCGOUGAN PHYSICAL DETAILS DRAWINGS AND THE REQUIREMENTS OF BS EN 752:2008.
- INVERT LEVELS AND POSITIONS OF EXISTING DRAINAGE/CHAMBERS/SEWERS WHERE NEW CONNECTIONS ARE TO BE MADE MUST BE CHECKED AND CONFIRMED TO THE ENGINEER PRIOR TO THE COMMENCEMENT OF ANY WORKS.
- ANY PART OF THE EXISTING DRAINAGE SYSTEM TO BE RETAINED AS PART OF THE NEW SCHEME SHALL BE CLEANED AND REPAIRED. ANY STRUCTURAL DEFECTS SHALL BE REPAIRED USING APPROPRIATE AND APPROVED MEANS.
- ALL EXISTING DRAINS WHICH ARE NOT INCORPORATED IN THE NEW DESIGN AND WHICH ARE NOT REQUIRED TO BE DEMOLISHED DURING CONSTRUCTION OF THE NEW WORKS, SHALL BE FILLED BY PACKING A 10:1 MIX BY WEIGHT OF PLUMBERED FINE ASH TO GRANULAR PORTLAND CEMENT WITH SUFFICIENT WATER ADDED TO GIVE A CREAM CONSISTENCY AND ENSURE OPTIMUM COMPACTION. CARE SHALL BE TAKEN TO DRAIN OFF ANY EXCESS WATER AFTER THE MIX HAS BEEN PLACED. THE SLURRY SHALL BE TRANSFERRED BY A SUITABLE CHUTE TO THE DRAIN THROUGH A 25mm MESH SCREEN TO PREVENT BLOCKAGE.
- ALL IN-SITU CONCRETE TO BE GRADE C20 USING SULPHATE RESISTING CEMENT UNLESS SPECIFIED OTHERWISE.

DESIGN ASSUMPTIONS

- ALL INDICATED FRESHED MANHOLE COVER LEVELS HAVE BEEN TAKEN FROM CASS ASSOCIATES RESTORATION LEVELS DRAWING (DATE 04/10/2010).
- DISCHARGE RATES FOR STORM AND FOLL WATER FROM EACH DESIGNATED PLOT HAVE BEEN CALCULATED BASED ON DESIGN NUMBERS AND AREAS GIVEN IN TABLE A2 OF THE MASTER PLAN STATEMENT. INITIAL DISCHARGE RATE: 100 LPM/HECTARE - SEPTEMBER 2008. PRODUCTION BY CASS ASSOCIATES ON BEHALF OF BAE SYSTEMS. ANY VARIATION ON THE NUMBER GIVEN MAY REQUIRE A REVISION OF THE NETWORK.
- THE DESIGN IS BASED UPON THE AGREEMENT WITH SCOTCH WATER THAT A MINIMUM OF 1250MM WILL DISCHARGE THROUGH THE NORTHERN PUMPING STATION (PS01) FROM THE SITE, WITH THE REMAINDER DISCHARGING TO THE SOUTHERN PUMPING STATION (PS02). ANY VARIATION TO THIS DESIGN PRINCIPLE WILL REQUIRE RECONSIDERATION WITH SCOTCH WATERS.
- CONTAMINATED LAND IS KNOWN TO BE PRESENT WITHIN THE SITE. AT RELATIVELY HIGH LEVELS WITHIN THE EXISTING STRATA, DRAINAGE RUNS HAVE BEEN DESIGNED WITH THIS IN MIND.
- FIRST STAGE SUDS TREATMENT FOR BOTH THE SOUTHERN AND NORTHERN ACCESS ROADS WILL BE PROVIDED BY OTHERS.

LEGEND

- STORM WATER NETWORK
- FOUL WATER NETWORK
- FOUL WATER PUMPING MAIN NETWORK
- STORM WATER PLOT DISCHARGE POINT
- FOUL WATER PLOT DISCHARGE POINT
- LOCATION OF PROPOSED PUMPING STATION (LAYOUT INDICATIVE)



Revision	Staff	App	Date

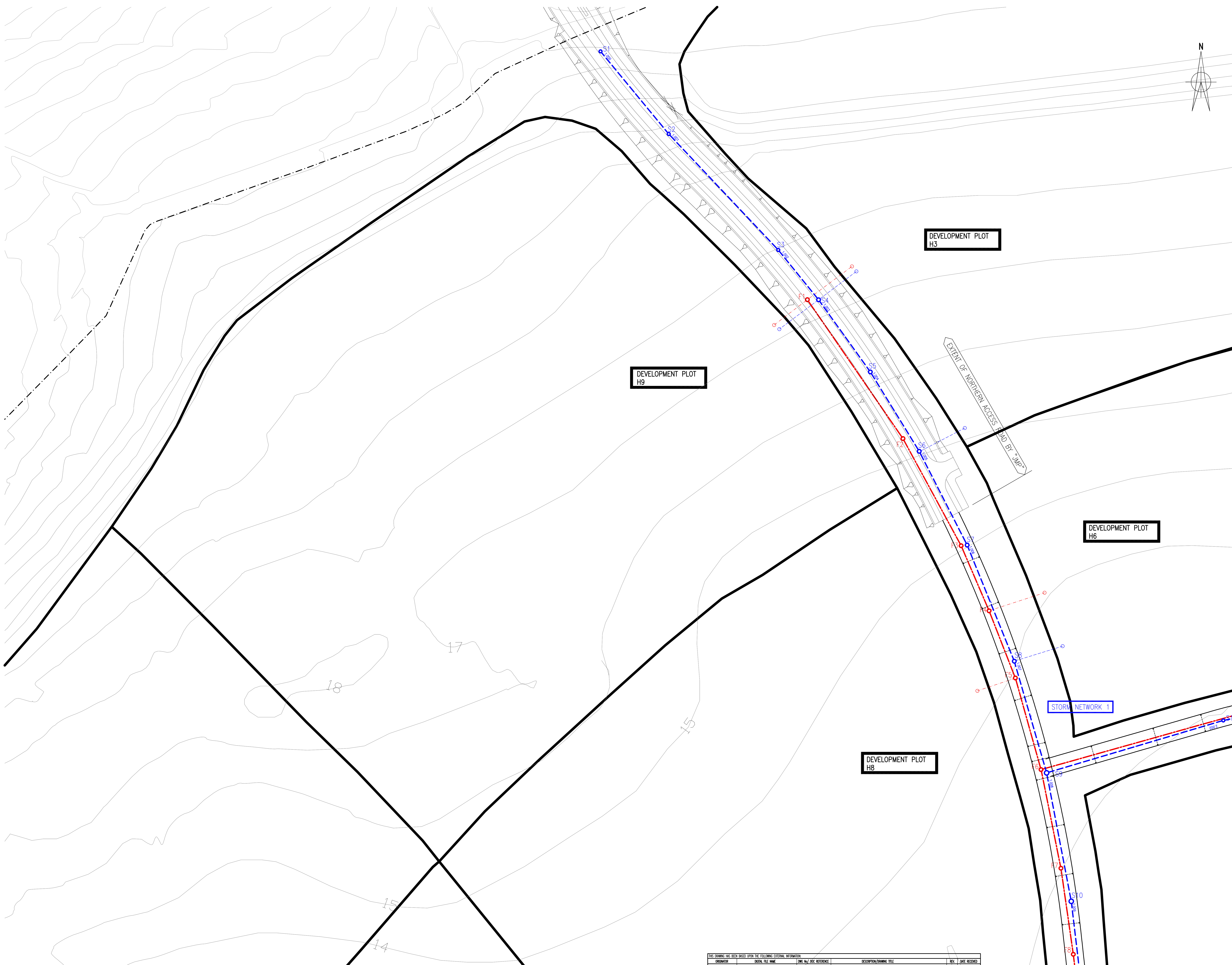
Upton McGougan Ltd
 6b Forres Street
 Edinburgh
 EH3 6BJ
 Tel: 0131 220 4944
 Fax: 0131 220 4948
 website: www.uptonmcgougan.com
 email: ed@uptonmcgougan.com

Project
**PROPOSED REDEVELOPMENT
 RO BISHOPTON**

Drawing Title
**DRAINAGE LAYOUT
 SHEET 1 OF 14**

Drawn	Date	Checked	Date
GW	APRIL 2011		

Scale
1:500 (AT A3 SIZE)
 Drawing Number
185.0003-411 Rev
A



THIS DRAWING HAS BEEN BASED UPON THE FOLLOWING EXISTING INFORMATION:

SYMBOL	DESCRIPTION	DATE	BY	DATE RECEIVED